

A close-up photograph of a silver, cylindrical metal component. The top edge of the component is engraved with the word 'TRIBOS' in a bold, sans-serif font, with a registered trademark symbol (®) to its upper right. The component has several distinct horizontal bands or grooves, suggesting a multi-part assembly or a specific manufacturing process. The background is a solid, vibrant purple color.

TRIBOS®

Clamping Systems



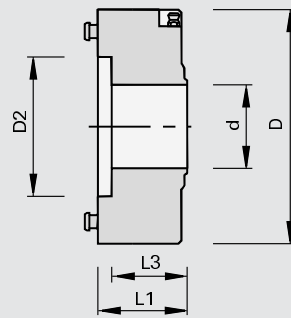
Product	Page
Quick-Clamping Systems	7-1
Attachment Sleeves and Flanges	7-16
Clamping Systems with cylindrical shank for shank-type tools	7-22
Clamping Systems with SK and BT shank for shank-type tools	7-30
Clamping Systems with SK and BT shank for tools with bore	7-38
Clamping Systems with HSK shank for shank-type tools	7-39
Clamping Systems with HSK shank for tools with bore	7-47
Clamping Systems with MK shank for shank-type tools	7-60
Clamping Systems for Drill Bits	7-62
LEUCO dusthoods	7-71
Mounting Devices	7-73
Technical Information	7-77

933011

Clamping Systems Ø 110 mm

product

drawing



Machine / Application

- | double end tenoners
- | through feed machines
- | for mounting of tools with bore and for combination with mounting flanges Ø 110 mm

Design

- | hardened tool mounting area
- | n max = 9,000 min-1

Advantages

- | excellent balance quality
- | long tool life
- | consistent runout accuracy after each tool change
- | minimization of setup-times thanks to easy and quick tool change
- | maintenance-free and protected from dust

Notes

- | for clockwise and counter-clockwise rotation
- | indicate machine type and shaft design when placing an order
- | required tool adapters Class-No. 997370
- | for changing the tools the pneumatic part Ident-No. 058250 is necessary
- | operational pressure 6 bar
- | included in delivery: clamping part incl. cap for attachment on the machine spindle

Ø D	Ø D2	Ø d	L1	L3	DKN	Ident-No.
110	50	30	63	47.5	8x3	172399 &
110	50	30	63	47.5	8x3	Homag, Lehbrink, Torwegge, SPA, Wilmsmeyer 160836
110	50	35	63	47.5	10x4	Spanevello 162599
[mm]	[mm]	[mm]	[mm]	[mm]	[mm]	

spare parts

Dimension

for Ident-No.

Class-No.

Ident-No.

Head Cap Screws	M12x30 DIN EN ISO 4762	172399	995111	001917
Covers		172399	997370	172397
Covers		160836	997370	181802
Covers		162599	997370	162602
Spacers	55x23,5x30	172399	955520	172398
pneumatic hose			994200	058250
	[mm]			

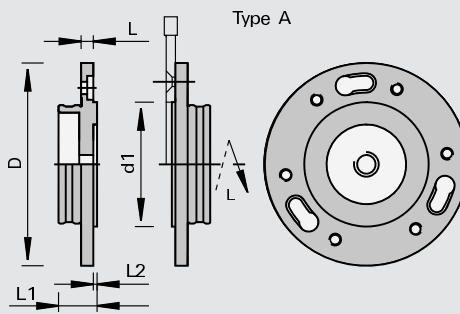
997370

Mounting Flanges for Clamping System Ø 110 mm

product



drawing



Machine / Application

for the mounting of saw blades up to Ø 250 mm with bore Ø 65 mm, 6 countersunk holes TK 90 mm for screw M 5

Design

Advantages

Notes

- for clockwise and counter-clockwise rotation
- especially suited for the mounting of scoring saw blades
- at least two separate tool/flange assemblies should be used per clamping element (reduced downtimes)
- for DP circular saw blades the cylindrical head screw Ident-No. 001869 is necessary (to be ordered separately)

Ø D	Ø d1min	L2	L	L1	Ident-No. [L]	Ident-No. [R]
110	65	2,5	10	27	164770	164758
[mm]	[mm]	[mm]	[mm]	[mm]		

spare parts

Dimension

Class-No.

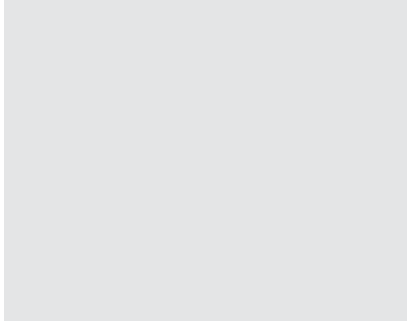
Ident-No.

spare parts	Dimension		Class-No.	Ident-No.
Countersunk Flat Headed Screws	M5x12	for mounting of saw blade	995122	180007
Head Cap Screws	M5x12 DIN 912	for mounting of DP saw blades	995111	001869
	[mm]			

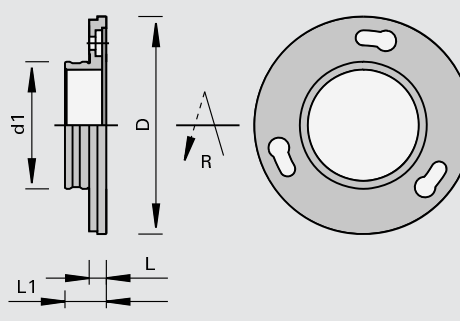
997370

Mounting Flanges for Clamping System Ø 110 mm

product



drawing



Machine / Application

for the mounting of saw blades up to Ø 250 mm and saw plate thickness 1.8 - 2.2 mm with bore Ø 50 mm, 3 NL - Ø 22 mm, TK Ø 80 mm

Design

Advantages

Notes

- for clockwise and counter-clockwise rotation
- especially suited for the mounting of scoring saw blades

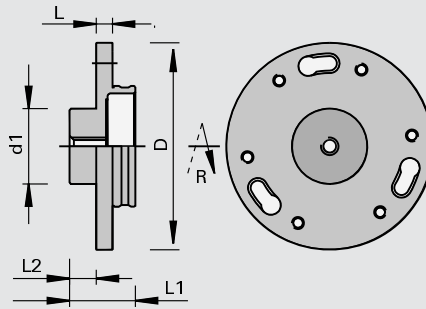
Ø D	Ø d1min	L	L1	Ident-No.
107	50	10	26.5	160849
[mm]	[mm]	[mm]	[mm]	

997370

Mounting Flanges for Clamping System Ø 110 mm

product

drawing



Machine / Application

Design

Advantages

Notes

for mounting of light tools with bore Ø 30 mm, 6 countersunk holes for M 5, TK Ø 90 mm

for clockwise and counter-clockwise rotation
at least two separate tool/flange assemblies should be used per clamping element (reduced downtimes)

Ø D	Ø d1min	L2	L	L1	Ident-No. [L]	Ident-No. [R]
110	30	15,5	10	40	163705	163226
[mm]	[mm]	[mm]	[mm]	[mm]		

spare parts

Dimension

Class-No.

Ident-No.

Countersunk Flat Headed Screws	M5x12	995122	180007
Head Cap Screws	M5x12 DIN 912	995111	001869
	[mm]		

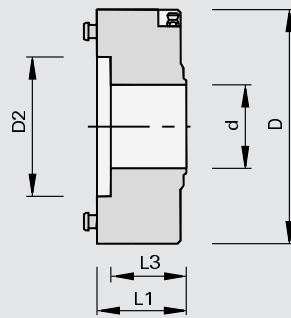
933011

Clamping Systems Ø 140 mm

product



drawing



Machine / Application

- | double end tenoners
- | through feed machines
- | for mounting of tools with bore and for combination with mounting flanges Ø 140 mm

Design

- | n max = 9,000 min-1

Advantages

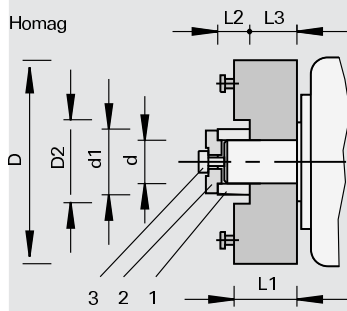
- | excellent balance quality
- | long tool life thanks to hardened tool mounting area
- | consistent runout accuracy after each tool change
- | minimization of setup-times thanks to easy and quick tool change
- | maintenance-free and protected from dust

Notes

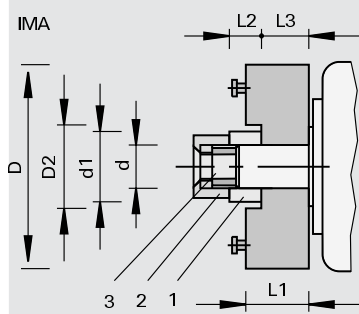
- | for clockwise and counter-clockwise rotation
- | mounting examples (see drawings): shaft with internal thread, shaft with external thread
- | indicate machine type and shaft design when placing an order
- | required tool adapters Class-No. 997370
- | for changing the tools the pneumatic part Ident-No. 058250 is necessary
- | operational pressure 6 bar
- | included in delivery: clamping part incl. cap for attachment on the machine spindle (spare parts for Homag and IMA not included in delivery)

Ø D	Ø D2	Ø d	L1	L3	DKN		Ident-No.
140	80	30	57	41.5	8x3	Homag	167453
140	80	35	57	41.5	10x4	Homag, IMA	167451
140	80	40	57	41.5	12x5		167452
[mm]	[mm]	[mm]	[mm]	[mm]	[mm]		

spare parts	Ø D	Ø D1	Ø d	for Ident-No.	Class-No.	Ident-No.
Covers	40	30	17	167453	997370	181802
Covers	45	35	22	167451	997370	180082
Covers	48	40	22	167452	997370	180121
Special Nuts	58		M30 x 1,5		995290	170364
	[mm]	[mm]	[mm]			



spare parts	Dimension	Ø D	Ø d1	Ø D	for Ident-No.	Class-No.	Ident-No.
1 centering adapter				30	167453	997370	168457 s
2 caps		40	30	17	167453	997370	181802
1 centering adapter				35	167451	997370	180540
2 caps		45	35	22	167451	997370	180082
3 cylindrical head screws for Ød=30	M12x55R					995111	80068438
3 cylindrical head screws for Ød=30	M16x35L					995111	80068436
	[mm]	[mm]	[mm]	[mm]			



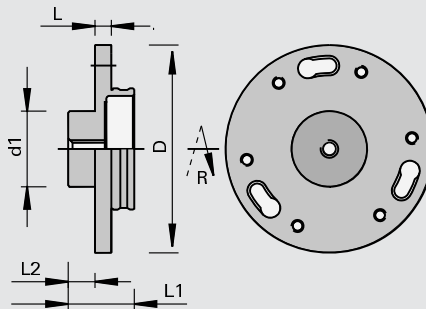
spare parts	Ø D	Ø d	Dimension	Class-No.	Ident-No.
1 centering adapter		35		997370	180540
2 special nuts			M35x1,5	995290	IMA3
3 countersunk flat headed screws				995121	IMA4
4 spacers	70	35	70x25x35	955520	170363
	[mm]	[mm]	[mm]		

997370

Mounting Flanges for Clamping System Ø 140 mm

product

drawing



Machine / Application

Design

Advantages

Notes

for mounting of medium-weight tools with bore Ø 30 mm, 6 countersunk holes for M 8, TK Ø 110 mm

- for clockwise and counter-clockwise rotation
- for S-System on shaft with internal thread
- indicate shaft design when placing an order
- at least two separate tool/flange assemblies should be used per clamping element (reduced downtimes)

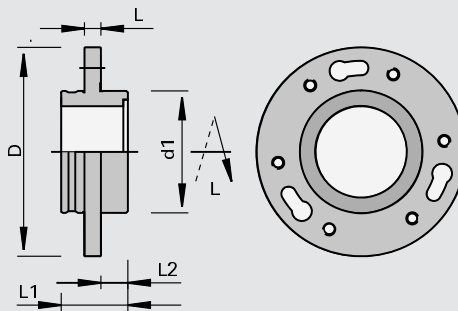
Ø D	Ø d1min	L2	L	L1	Ident-No. [L]	Ident-No. [R]
137	30	17,4	10,8	43,4	163946	163945
[mm]	[mm]	[mm]	[mm]	[mm]		

997370

Mounting Flanges for Clamping System Ø 140 mm

product

drawing



Machine / Application

Design

Advantages

Notes

for mounting of medium-weight tools with bore Ø 80 mm, 6 countersunk holes for M 8, TK Ø 110 mm

- for clockwise and counter-clockwise rotation
- for S-System on shafts with external thread
- indicate shaft design when placing an order
- at least two separate tool/flange assemblies should be used per clamping element (reduced downtimes)

Ø D	Ø d1min	L2	L	L1	Ident-No. [L]	Ident-No. [R]
137	80	17,5	11,8	44,7	168401	168400
[mm]	[mm]	[mm]	[mm]	[mm]		

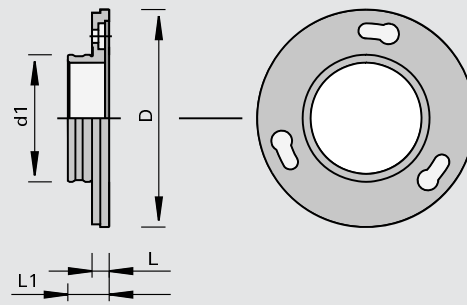
997370

Mounting Flanges for Clamping System Ø 140 mm

product



drawing



Machine / Application

for the mounting of saw blades up to Ø 400 mm and saw plate thickness 1.8 - 2.2 mm with bore Ø 80 mm, 3 NL - Ø 22 mm, TK Ø 110 mm

Design

Advantages

Notes

Ø D	Ø d1min	L	L1	Ident-No.
137 [mm]	80 [mm]	10 [mm]	28 [mm]	177050

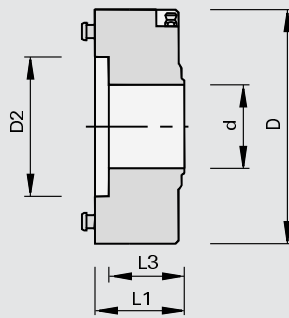
933011

Clamping Systems Ø 160 mm

product



drawing



Machine / Application

- | double end tenoners
- | through feed machines
- | for mounting of tools with bore

Design

- | n max = 9,000 min-1

Advantages

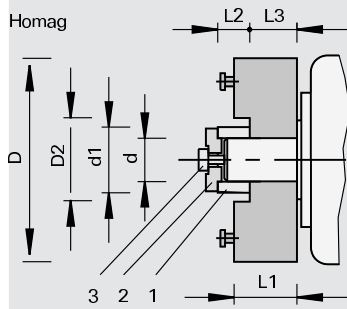
- | excellent balance quality
- | long tool life thanks to hardened tool mounting area
- | consistent runout accuracy after each tool change
- | minimization of setup-times thanks to easy and quick tool change
- | maintenance-free and protected from dust

Notes

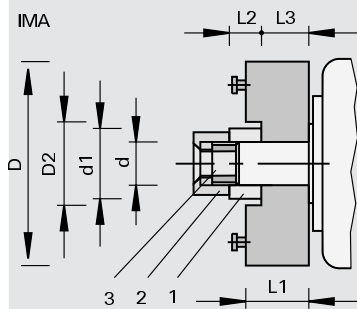
- | for clockwise and counter-clockwise rotation
- | mounting examples (see drawing): shaft with internal thread, shaft with external thread
- | indicate machine type and shaft design when placing an order
- | required tool adapters Class-No. 997370
- | for changing the tools the pneumatic part Ident-No. 058250 is necessary
- | operational pressure 6 bar
- | included in delivery: clamping part incl. cap for attachment on the machine spindle (spare parts for Homag and IMA not included in delivery)

Ø D	Ø D2	Ø d	L1	L3	DKN		Ident-No.	
160	80	35	60	44.5	10x4	Homag, IMA	167462	
160	80	40	60	44.5	12x4		167463	
[mm]	[mm]	[mm]	[mm]	[mm]	[mm]			
spare parts			Ø D	Ø D1	Ø d		Class-No.	Ident-No.
Covers			40	30	17		997370	181802
Covers			45	35	22		997370	180082
Covers			48	40	22		997370	180121
Special Nuts			58		M30 x 1,5		995290	170364
			[mm]	[mm]	[mm]			





spare parts	Dimension	Ø D	Ø D1	Ø d	Class-No.	Ident-No.
1 centering adapter				30	997370	168457 s
2 caps		40	30	17	997370	181802
1 centering adapter				35	997370	180540
2 caps		45	35	22	997370	180082
3 cylindrical head screws for Ød=35	M16x55R				995111	80068439
3 cylindrical head screws for Ød=35	M20x35L				995111	80068437
4 spacers		60		35	955520	180647
	[mm]	[mm]	[mm]	[mm]		



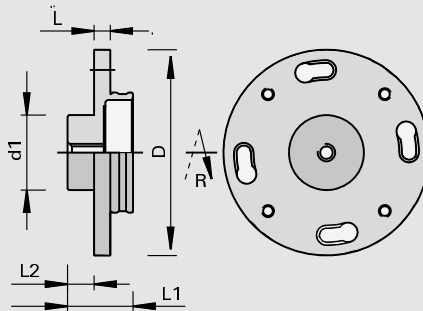
spare parts	Ø D	Ø d	Dimension	Class-No.	Ident-No.
1 centering adapter		35		997370	180540
2 special nuts			M35x1,5	995290	IMA3
3 countersunk flat headed screws				995121	IMA4
4 spacers	70	35	70x25x35	955520	170363
	[mm]	[mm]	[mm]		

997370

Mounting Flanges for Clamping System Ø 160 mm

product

drawing



Machine / Application

Design

Advantages

Notes

for mounting of heavy tools with bore Ø 30 mm with 4 countersunk holes M 8, TK Ø 130 mm

- for S-System on shaft with external thread
- for clockwise and counter-clockwise rotation
- indicate shaft design when placing an order
- at least two separate tool/flange assemblies should be used per clamping element (reduced downtimes)
- sense of rotation see drawing

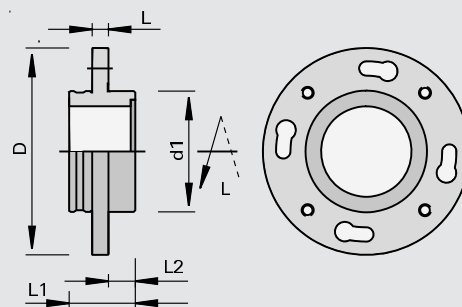
Ø D	Ø d1min	L2	L	L1	Ident-No. [L]	Ident-No. [R]
157	30	17,4	10,8	43,4	167465	167464
[mm]	[mm]	[mm]	[mm]	[mm]		

997370

Mounting Flanges for Clamping System Ø 160 mm

product

drawing



Machine / Application

Design

Advantages

Notes

for mounting of heavy tools with bore Ø 80 mm with 4 countersunk holes M 8, TK Ø 130 mm

- for S-System on shaft with external thread
- for clockwise and counter-clockwise rotation
- indicate shaft design when placing an order
- at least two separate tool/flange assemblies should be used per clamping element (reduced downtimes)
- sense of rotation see drawing

Ø D	Ø d1min	L2	L	L1	Ident-No. [L]	Ident-No. [R]
157	80	18	11,8	45	168399	168398
[mm]	[mm]	[mm]	[mm]	[mm]		

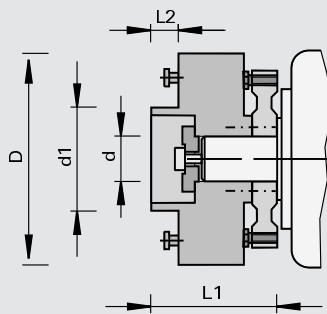
933011

Zeroplan Clamping Systems Ø 160 mm

product



drawing



Machine / Application

- | double end tenoners
- | through feed machines
- | for mounting of tools with bore and for combination with mounting flanges Ø 160 mm

Design

- | n max = 7,200 min-1

Advantages

- | high runout accuracy almost as good as on hydro motors, now available for standard-motor shafts d = 35
- | distinct increase of edge life and quality thanks to precise run-out-adjustment
- | consistent runout accuracy after each tool change
- | minimization of setup-times thanks to easy and quick tool change
- | maintenance-free and protected from dust

Notes

- | for clockwise and counter-clockwise rotation
- | for changing the tools the pneumatic part Ident-No. 058250 is necessary
- | operational pressure 6 bar

Ø D	Ø d	Ø d1min	L2	L1	DKN		Ident-No.
160	35	60	17,5	95	10x4	Homag	180654
160	35	60	17,5	102	10x4	IMA	180655
[mm]	[mm]	[mm]	[mm]	[mm]	[mm]		

spare parts

Dimension

Class-No.

Ident-No.

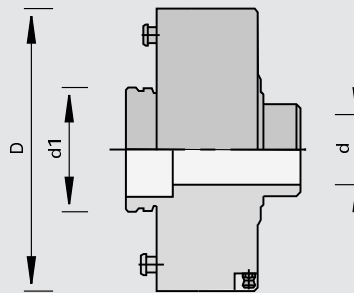
Covers (IMA)	45x25x35 DKN	997370	180656	o
Engineers Wrenches	SW10/13 DIN 895	985720	171060	o
	[mm]			

933011

Clamping Systems Ø 192 mm

product

drawing



Machine / Application

- | double end tenoners
- | through feed machines
- | for mounting of hoggers with Ø 250 mm

Design

- | n max = 7,200 min-1

Advantages

- | excellent balance quality
- | long tool life thanks to hardened tool mounting area
- | consistent runout accuracy after each tool change
- | minimization of setup-times thanks to easy and quick tool change
- | maintenance-free and protected from dust

Notes

- | for clockwise and counter-clockwise rotation
- | mounting example (see drawing)
- | indicate machine type and shaft design when placing an order
- | required tool adapters Class-No.
- | operational pressure 6 bar
- | included in delivery: see accessory list

Ø D	Ø d	Ø d1min	KN	DKN		Ident-No.	
192	35	80		10x4	clamping part, spacer ring	IMA, B+G, Hüllhorst	161363 &
192	35	80		10x4	clamping part, spacer ring	B+G (flat nut)	161364 &
192	40	80		12x5	clamping part, spacer ring	B+G, SCM-Stefani	161365 &
192	35	80		10x4	clamping part, spacer ring	Celaschi	161366 &
192	35	80		10x4	clamping part, spacer ring, cover disk	Danckaert	161367 &
192	40	80	10x4		clamping part, spacer ring	Gabbiani	161257 &
192	35	80		10x4	clamping part, spacer ring	Festo	161256 &
192	35	80		10x4	clamping part, spacer ring, cover disk	Frommia	161258 &
192	35	80		10x4	clamping part	Homag, Lehbrink, Torwegge, SPA, Wilmsmeyer	161259
192	35	80		10x4	clamping part, spacer ring, cover disk	Kuhlmann	161260 &
192	40	80		12x5	clamping part, spacer ring, cover disk	M+S, Schwabedissen	161251 &
192	35	80		10x4	clamping part, cover disk	Raimann	161252 &
192	30	80			clamping part	SPA	161253 s
192	30	80		8x3	clamping part	Wadkin	161254 s
192	35	80		10x4	clamping part	Wigo	161255 s
[mm]	[mm]	[mm]	[mm]	[mm]			



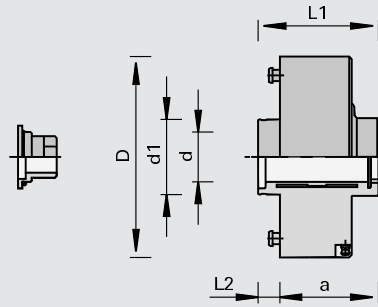
933011

Hydro Clamping Systems Ø 160 mm

product



drawing



Machine / Application

| for mounting of tools with bore

Design

| hardened tool mounting area
 | n max = 9,000 min-1
 | closed hydraulic expansion clamping chuck with one clamping zone for tight-tolerance fit on the motor shaft

Advantages

| high cutting quality thanks to distinctly increased runout accuracy and concentricity
 | consistent runout accuracy after each tool change
 | minimization of setup-times thanks to easy and quick tool change
 | maintenance-free

Notes

| for clockwise and counter-clockwise rotation
 | specifically designed for high-precision motors with hexagonal spindle base
 | for changing the tools the pneumatic part Ident-No. 058250 is necessary
 | operational pressure 6 bar
 | included in delivery: hydro quick-clamping system incl. Screwdrivers

Ø D	Ø d	Ø d1min	L2	L1	a		Ident-No.
160	40	60	17,5	96	78.5	Hoggers	172677
[mm]	[mm]	[mm]	[mm]	[mm]	[mm]		

spare parts

	Class-No.	Ident-No.
Covers with O-Rings	997300	172679
Head Cap Screws	995111	177105
pneumatic hose	994200	058250
Screwdrivers	985730	167817
Cranked Wrench Keys	985730	177106

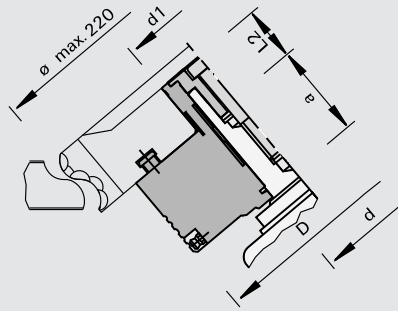
933011

Hydro Clamping Systems Ø 160 mm

product



drawing



Machine / Application

| for mounting of tools with bore

Design

| hardened tool mounting area
 | n max = 9,000 min-1
 | closed hydraulic expansion clamping chuck with one clamping zone for tight-tolerance fit on the motor shaft

Advantages

| high cutting quality thanks to distinctly increased runout accuracy and concentricity
 | consistent runout accuracy after each tool change
 | minimization of setup-times thanks to easy and quick tool change
 | maintenance-free

Notes

| for clockwise and counter-clockwise rotation
 | specifically designed for high-precision motors with hexagonal spindle base
 | for changing the tools the pneumatic part Ident-No. 058250 is necessary
 | operational pressure 6 bar
 | included in delivery: hydro quick-clamping system incl. Screwdrivers

Ø D	Ø d	Ø d1min	L2	a		Ident-No.
160	40	60	35	53	milling tools	176829
[mm]	[mm]	[mm]	[mm]	[mm]		

spare parts

	Class-No.	Ident-No.
Covers with O-Rings	997300	172679
Head Cap Screws	995111	177105
pneumatic hose	994200	058250
Screwdrivers	985730	167817
Cranked Wrench Keys	985730	177106

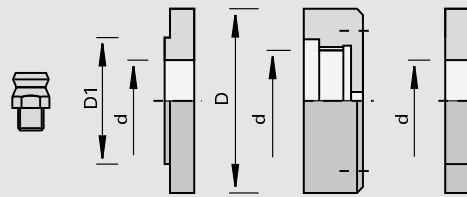


Accessories for Quick-Clamping Systems

product



drawing



Machine / Application

for engaging or releasing the LEUCO quick-clamping systems

Design

Advantages

Notes

- | anti-twist bolt Ident-No. 160875 for mounting
- | ring Ident-No. 170363 is required for L = 68 mm if no centering adapter is used
- | nut Ident-No. 170364 is required for IMA machines with short shaft
- | the pneumatic hose is required to change the tools; must be ordered separately before first delivery of clamping systems

	Class-No.	Ident-No.
hydraulic connector R 1/8" (old design)	994400	160632
hydraulic connector M10x1 (new design)	994400	180084
fitting	997800	161289
pneumatic hose complete	994200	058250

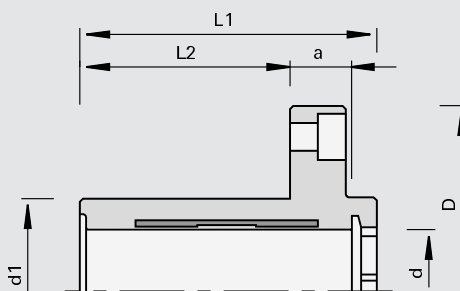
spare parts	for S-System Ø D/d	Ø D	Ø D1	Ø d	Class-No.	Ident-No.
Covers	110/140/160/30	40	30	17	997370	181802
Covers	110/35	40	35	17	997370	162602
Covers	140/160/35	45	35	22	997370	180082
Covers	140/160/40	48	40	22	997370	180121
Special Nuts	140/160/35	58		M30 x 1,5	995290	170364
Spacers	140/160/35	70		35	955520	170363
Bolts	110/140/160			10x120	995322	160875
		[mm]	[mm]	[mm]		

933030

Hydro Clamping Bushings - tools with bore

product

drawing



Machine / Application

- for mounting of tools with bore

Design

- hardened tool mounting area
- Ident-No. 172678 with one clamping zone
- Ident-No. 182103 with two clamping zones and for use with adjustment unit
- closed hydraulic expansion clamping chuck for tight-tolerance fit on the motor shaft

Advantages

- optimum cutting quality when milling and hogging
- maintenance-free and inured to dirt

Notes

- for clockwise and counter-clockwise rotation
- specifically designed for high-precision motors with hexagonal spindle base
- included in delivery: hydro clamping bushing without screwdrivers

$\varnothing D$	$\varnothing d$	$\varnothing d_{1min}$	L2	L1	a	NL	Ident-No.
120	40	60	68	96	20	4/M8/100	172678
120	40	60	68	96	20	4/M8/100	182103
[mm]	[mm]	[mm]	[mm]	[mm]	[mm]		

spare parts

Class-No.

Ident-No.

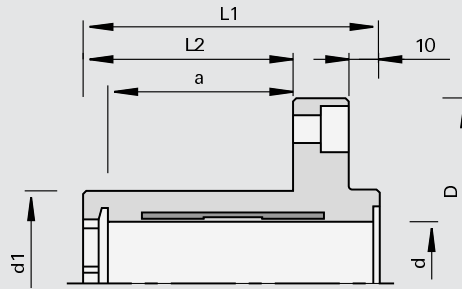
Covers with O-Rings	for axial locking or bores 40 mm	997300	172679
Head Cap Screws	M14x70 DIN 6912 for 172679	995111	177105
Screwdrivers	SW6 for hydro pressure build-up	985730	167817
Cranked Wrench Keys	SW12 DIN 6911	985730	177106

933030

Hydro Clamping Bushings - tools with bore

product

drawing



Machine / Application

for mounting of tools with bore and for combination with Postforming radius panel raising cutters und LEUCODIA CompactTec hoggers

Design

hardened tool mounting area
with one clamping zone
closed hydraulic expansion clamping chuck for tight-tolerance fit on the motor shaft

Advantages

excellent cutting quality when milling and hogging
maintenance-free

Notes

for clockwise and counter-clockwise rotation
specifically designed for high-precision motors with hexagonal spindle base
included in delivery:
Hydro Clamping Bushing incl. screwdriver SW 6

Ø D	Ø d	Ø d1min	L2	L1	a	NL	Ident-No.
120	40	60	68	96	60	4/M8/100	173724
[mm]	[mm]	[mm]	[mm]	[mm]	[mm]		

spare parts

Class-No.

Ident-No.

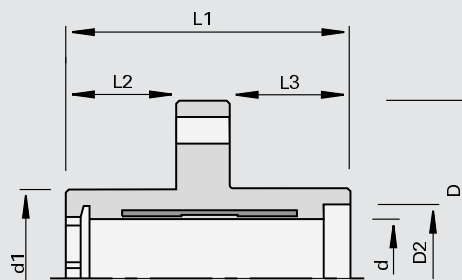
Covers with O-Rings		for axial locking or bores 40 mm	997300	172679
Head Cap Screws		M14x70 DIN 6912 for 172679	995111	177105
Screwdrivers		SW6 for hydro pressure build-up	985730	167817
Cranked Wrench Keys		SW12 DIN 6911	985730	177106

933030

Hydro Clamping Bushings - tools with bore progressively adjustable

product

drawing



Machine / Application

for mounting of tools with cutters with progressive adjustment of the cutting width

Design

hardened tool mounting area
with one clamping zone
closed hydraulic expansion clamping chuck for tight-tolerance fit on the motor shaft

Advantages

excellent cutting quality when milling
maintenance-free

for clockwise and counter-clockwise rotation
specifically designed for high-precision motors with hexagonal spindle base

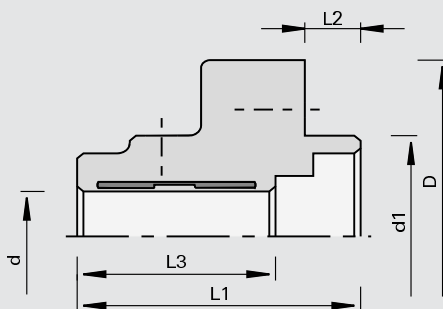
Ø D	Ø D2	Ø d	Ø d1min	L2	L1	L3	NL	Ident-No.
120	50	40	60	39	101	44	4/M8/100	180181
[mm]	[mm]	[mm]	[mm]	[mm]	[mm]	[mm]		

933030

Hydro Clamping Bushings - hoggers

product

drawing



Machine / Application

for mounting of tools with bore with LEUCO hoggers \varnothing 200 mm and \varnothing 250 mm

Design

hardened tool mounting area
with one clamping zone
closed hydraulic expansion clamping chuck for tight-tolerance fit on the motor shaft

Advantages

Notes

for clockwise and counter-clockwise rotation
fits conventional motors with shaft 35 mm and keyway

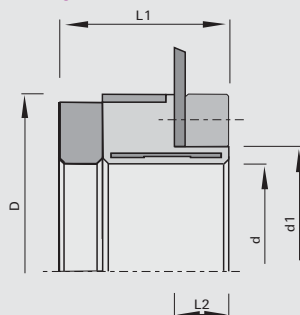
\varnothing D	\varnothing d	\varnothing d1min	L2	L1	L3	DKN	NL	Ident-No.
120	35	80	17,7	90	63	10x4	4/M8/100	170264 o
[mm]	[mm]	[mm]	[mm]	[mm]	[mm]	[mm]		

933030

Hydro Clamping Bushings - gang-rip saw blades and hoggers (Paul, Homag)

product

drawing



Machine / Application

machines Paul, Homag
for mounting of of multi-rip saw blades and hoggers

Design

hardened tool mounting area
with one clamping zone
closed hydraulic expansion clamping chuck for tight-tolerance fit on the motor shaft

Advantages

high smoothness of running
short retool-times of panel-widths thanks to quick adjustment of tools
maintenance-free

Notes

for clockwise and counter-clockwise rotation
mounting arrangements: 1. saw blade with spacer, 2. hogger without spacer
positive locking between machine and sleeve
tap holes on PCD for fixing of tools

\varnothing D	\varnothing d	\varnothing d1min	L2	L1	NL	Ident-No.
145	100	110	18	65.5	4/M8/130	183821
150	100	110	18	49.5	4/M8/130	183829
[mm]	[mm]	[mm]	[mm]	[mm]		

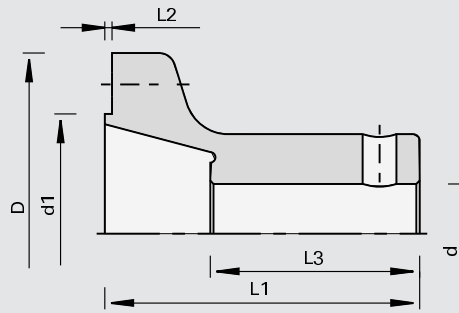
997300

Mounting Flanges - scoring saw blades (Homag, Brandt, IMA)

product



drawing



Machine / Application

- | double end tenoners
- | edge banding machines
Homag, Brandt, IMA
- | for mounting of HW scoring
saw blades and DP scoring saw
blades

Design

- | tempered design
- | mating and seating surfaces
ground

Advantages

Notes

- | for clockwise and counter-
clockwise rotation
- | for DP circular saw blades the
cylindrical head screw Ident-
No. 001869 is necessary (to
be ordered separately)
- | countersink screw included in
delivery

Ø D	Ø d	Ø d1min	L2	L1	L3	DKN	NL	Ident-No.
109	30	65	2,2	95	63	8x4	6/M5/90	006480
109	35	65	2,2	95	63	10x3,3	6/M5/90	182128
[mm]	[mm]	[mm]	[mm]	[mm]	[mm]	[mm]		

spare parts

	Ø D	Ø D1	Ø d	Class-No.	Ident-No.
Covers	40	30	17	997370	181802
Countersunk Flat Headed Screws	for mounting of saw blade			995122	180007
Head Cap Screws	for mounting of DP saw blades			995111	001869
	[mm]	[mm]	[mm]		

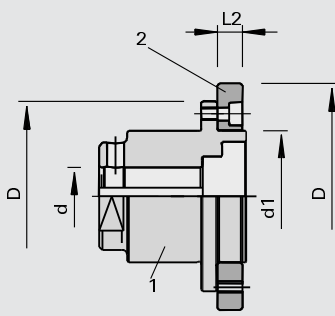
997300

Attachment Sleeves and Flanges - grooving saw blades, scoring saw blades, clipping saw blades and hoggers

product



drawing



Machine / Application

for mounting of grooving saw blades, scoring saw blades, clipping saw blades and hoggers

Design

Advantages

Notes

for clockwise and counter-clockwise rotation
 1 = hogger sleeve
 2 = flange
 for horizontally tilted motor when working in small distance to chain track

Ø D	Ø d	Ø d1min	L2	L1	DKN	NL	Ident-No.
115	30	80	17,7	96	8x3	8/M8/100	006309
115	35	60	17,7	90	8x3	8/M8/100	180062
115	35	80	17,7	90	8x3	8/M8/100	055997
115	40	60	17,7	90	8x3	8/M8/100	180120
115	40	80	17,7	96	8x3	8/M8/100	006308
[mm]	[mm]	[mm]	[mm]	[mm]	[mm]		

flange	Ø D	B	Ø d	Ø NL	Class-No.	Ident-No.
	137	80	15	6/M5/105	997300	819300 s
	[mm]	[mm]	[mm]			

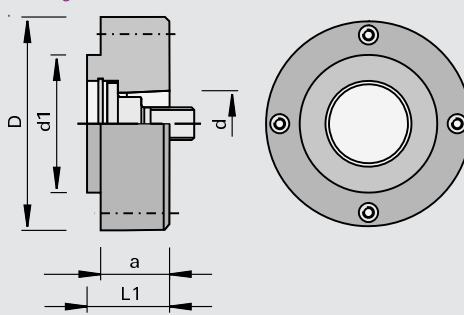
997300

Mounting Flanges - clipping saw blades (Homag, IMA)

product



drawing



Machine / Application

edge banding machines
 Homag, IMA
 for mounting of clipping saw blades

Design

machine interface HSK 25R

Advantages

optimum cutting quality thanks to high radial running accuracy and precise tool balancing

Notes

for clockwise and counter-clockwise rotation
 countersunk screw and screwdrivers are not included in delivery

Ø D	Ø d	Ø d1min	L1	a	NL	Ident-No.
55	HSK 25R	34	22	20	4/M4/44+4/M5/42	179025
62	HSK 25R	40	24	20	4/M5/52	177788
66	HSK 25R	40	24	15	4/M5/52	183817
[mm]	[mm]	[mm]	[mm]	[mm]		

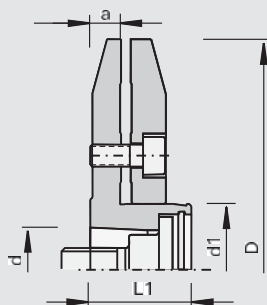
spare parts	Dimension	Class-No.	Ident-No.
Screws	M10x1,25x32 SW8	995190	177780
Shim Rings	18x25x1,0 DIN 988	995440	177781
Locking Rings	25x1,2 DIN 472	995460	177782
Countersunk Flat Headed Screws	M5x10 T20	995125	171236
Screwdrivers	T20x100	985730	166092
	[mm]		

997300

Mounting Flanges - clipping saw blades (Homag Power-Line)

product

drawing



Machine / Application

l machines Power-Line Homag
l for mounting of clipping saw blades

Design

l machine interface HSK 25R

Advantages

l optimum cutting quality thanks to high radial running accuracy and precise tool balancing

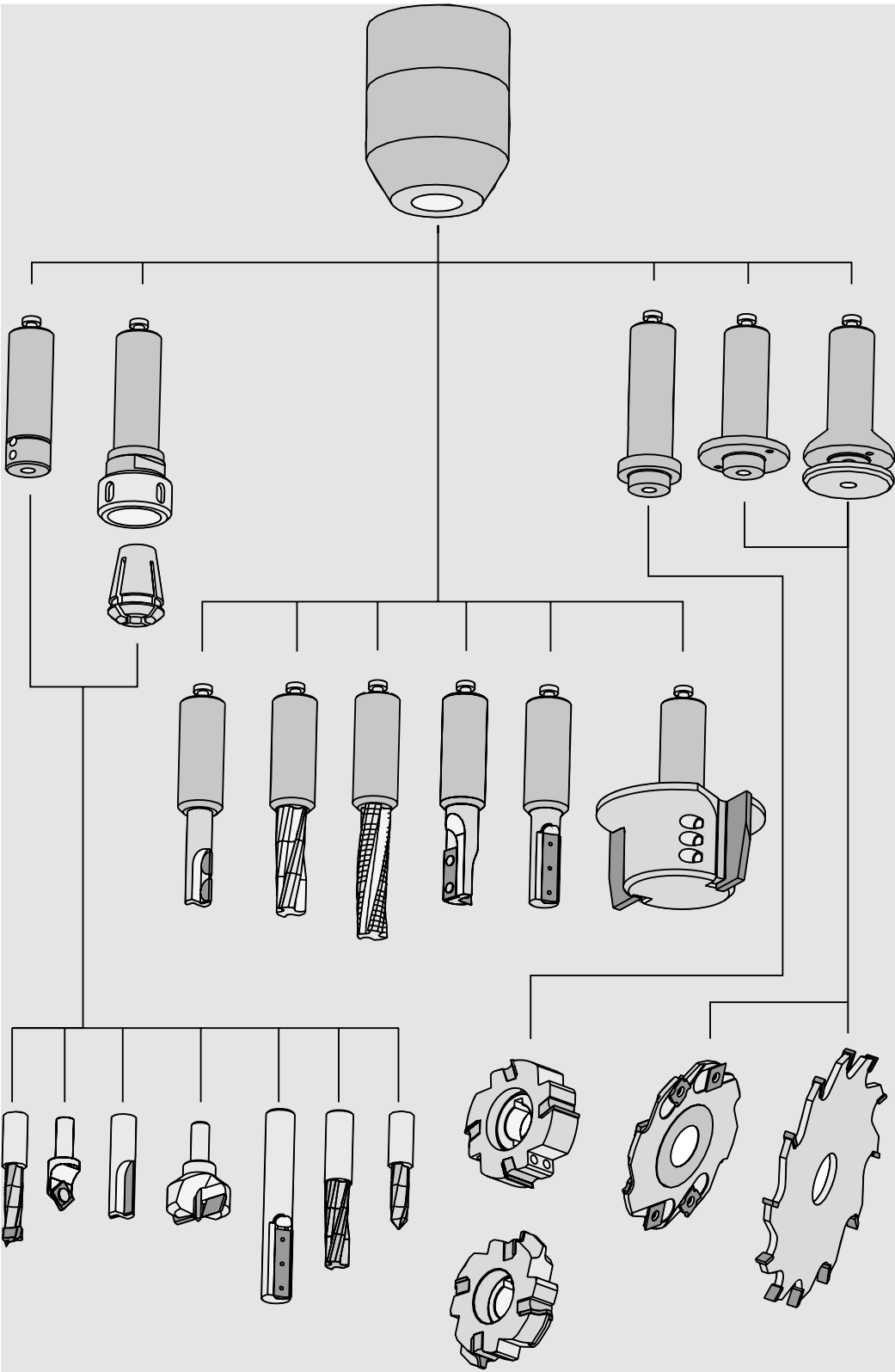
Notes

l for clockwise and counter-clockwise rotation

Ø D	Ø d	Ø d1min	L1	a	NL	Ident-No.
105	HSK 25R	30	23	14	4/M5/52	181590
[mm]	[mm]	[mm]	[mm]	[mm]		

spare parts	Dimension	Class-No.	Ident-No.
Screws	M10x1,25x32 SW8	995190	177780
Shim Rings	18x25x1,0 DIN 988	995440	177781
Locking Rings	25x1,2 DIN 472	995460	177782
Head Cap Screws	M5x12 DIN 912	995111	001869
Screwdrivers	SW4x100	985730	166091
	[mm]		

Chart Tool Holders machine interface PS 2000-E



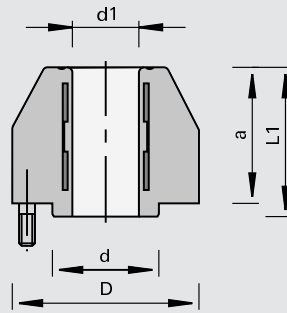
933240

Hydro Clamping Chucks PS 2000-E

product



drawing



LEUCO
GNC

Machine / Application

for precise clamping of shank-type tools with cylindrical shank

Design

n max = 25,000 min⁻¹

Advantages

- | optimum cutting quality and long tool life thanks to exact radial running accuracy
- | minimization of setup-times thanks to easy and quick tool change

Notes

- | for clockwise and counter-clockwise rotation
- | integral part of machine spindle
- | initial purchase through the machine manufacturers
- | axial locking of the tools

Ø D	Ø d	Ø d1min	L1	a	weight	Ident-No.
70 [mm]	40 [mm]	25 [mm]	56 [mm]	51 [mm]	1.327 [kg]	173752

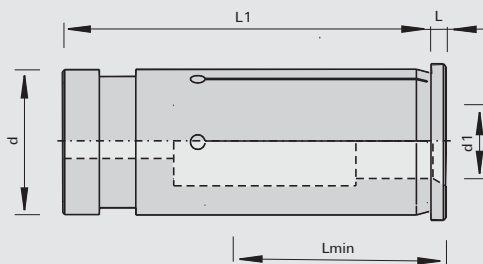
933280

Universal Reducing Bushings

product



drawing


LEUCO
CNC

Machine / Application

for mounting of shank-type tools in Sino, Tribos, PS-System

Design

shank diameter tolerance h7 or g7

Advantages

Notes

$\emptyset d_{1min}$	$\emptyset d_{1min}$	Lmin	$\emptyset d$	L1	L	Ident-No.
3		27	12	45	2	183022 o
4		27	12	45	2	183023 o
5		27	12	45	2	183024 o
6		27	12	45	2	183025
8		27	12	45	2	183026
3		27	20	50.5	2	183027 o
4		27	20	50.5	2	183028 o
5		27	20	50.5	2	183029 o
6		27	20	50.5	2	183030 o
7		27	20	50.5	2	183031 o
8		27	20	50.5	2	183032
9		27	20	50.5	2	183033 o
10		32	20	50.5	2	183034
11		37	20	50.5	2	183035 o
12		37	20	50.5	2	183036
13		37	20	50.5	2	183037 o
14		37	20	50.5	2	183038 o
15		38	20	50.5	2	183039 o
16		38	20	50.5	2	183040
17		38	20	50.5	2	183041 o
6		27	25	56.5	3	182304 o
8		27	25	56.5	3	182305
10		32	25	56.5	3	182306
12		37	25	56.5	3	182307
14		37	25	56.5	3	182308 o
16		38	25	56.5	3	182309
18		38	25	56.5	3	182310
20		42	25	56.5	3	182311
	1/2	37	25	56.5	3	182653
	5/8	38	25	56.5	3	182654 o
	3/4	42	25	56.5	3	182655 o
[mm]	[inch]	[mm]	[mm]	[mm]	[mm]	

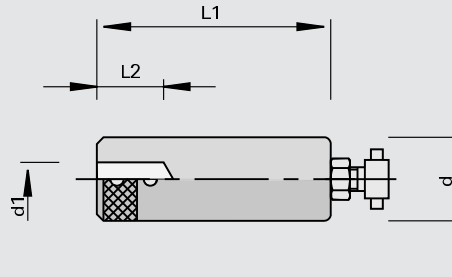
997800

Adapters with cylindrical shank

product



drawing



LEUCO
GVC

Machine / Application

for mounting of shank-type tools in PS 2000-E for shank diameter 6 - 12 mm

Design

Advantages

Notes

- | the tool shanks must feature a flat clamping area
- | length adjusting screw Ident-No. 172921 is required for PS 2000-E
- | with length adjusting screw for PS-System Ø 16 mm Ident-No. 172115, Ø 25 mm Ident-No. 172113

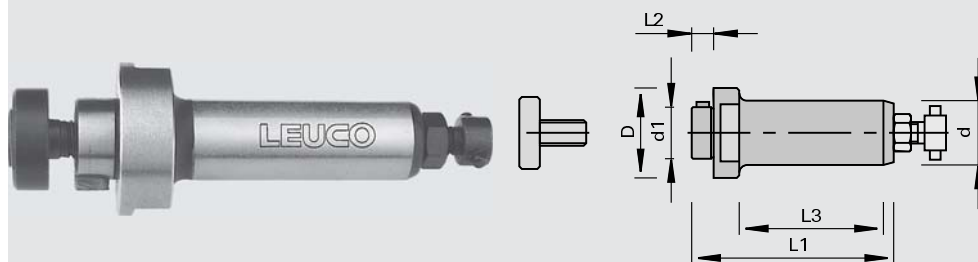
Ø d	Ø d1min	L2	L1	Ident-No.
16	6,35	20	61	172112
16	8	20	61	172117
16	9,5	20	61	172118
16	10	20	61	172119
25	6	20	70	172103
25	8	20	70	172104
25	9,5	20	70	172105
25	10	20	70	172101
25	12	20	70	172102
[mm]	[mm]	[mm]	[mm]	

997300

Adapters with cylindrical shank

product

drawing

LEUCO
CNC

Machine / Application

for PS 2000-E and draw-in collet chuck for the mounting of tools with bore

Design

tool held in place by set screws

Advantages

Notes

for clockwise and counter-clockwise rotation
length adjusting screw Ident-No. 172921 is required for PS 2000-E
included in delivery: mounting arbor, set screws and length adjusting screw for PS-System for shank Ø 16 Ident-No. 172115, shank Ø 25 Ident-No. 172113

Ø D	Ø d	Ø d1min	L2	L1	L3	Ident-No.
35	16	20	8,5	68	43	171389 o
35	25	20	8,5	78.5	55	171391 o
[mm]	[mm]	[mm]	[mm]	[mm]	[mm]	

spare parts

Dimension

Class-No.

Ident-No.

Cutter Retaining Bolts	Ø20xM8x23	995190	171393
Cutter Retaining Bolts	Ø28xM10x26	995190	171392
Engineers Wrenches	24x27 DIN 3110	985730	009193 o
	[mm]		

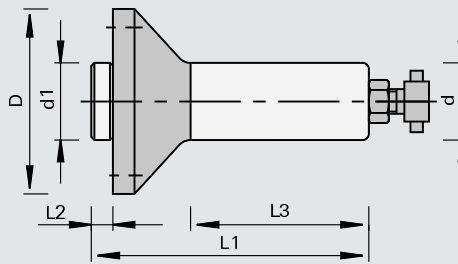
997300

Adapters with cylindrical shank

product



drawing



LEUCO
GNC

Machine / Application

for PS 2000-E and draw-in collet chuck for the mounting of tools with bore

Design

tool attached and secured against rotation with screws

Advantages

Notes

- | for clockwise and counter-clockwise rotation
- | length adjusting screw Ident-No. 172921 is required for PS 2000-E
- | clamping length L2 = 30 and 36 mm for single- and multi-piece cutters and cutterheads
- | clamping length L2 = 4 and 5 mm for circular saw blades and grooving cutters
- | included in delivery: mounting arbor and PS length adjusting screw for shank Ø 25 Ident-No. 172113

Ø D	Ø d	Ø d1min	L2	L1	L3	NL	Ident-No.
50	16	22	4	68	45	4/M5/34	171227 o
50	25	22	4	92	60	4/M5/34	167825
60	25	25	30	111	60	6/M6/48	168814 o
60	25	30	36	117	60	6/M6/48	168815
66	25	30	5	92	60	4/M5/48	171386
[mm]	[mm]	[mm]	[mm]	[mm]	[mm]		

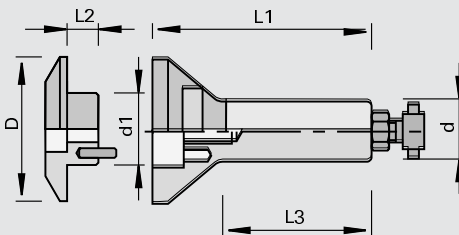
997300

Adapters with cylindrical shank

product



drawing

LEUCO
GNC

Machine / Application

for PS 2000-E and draw-in collet chuck for mounting of circular saw blades and grooving cutters

Design

secured against rotation with drive pin

Advantages

Notes

for clockwise and counter-clockwise rotation
length adjusting screw Ident-No. 172921 is required for PS 2000-E
included in delivery: clamping arbor, clamping flange, cap screw and length adjusting screw for PS-System for shank \varnothing 16 Ident-No. 172115, shank \varnothing 25 Ident-No. 172113

$\varnothing D$	$\varnothing d$	$\varnothing d_{1min}$	L2	L1	L3	Ident-No.
60	16	30	8	78	43	for plate thickness max. 6 mm 171394
60	25	30	9	94	55	for plate thickness max. 8 mm 167826
[mm]	[mm]	[mm]	[mm]	[mm]	[mm]	

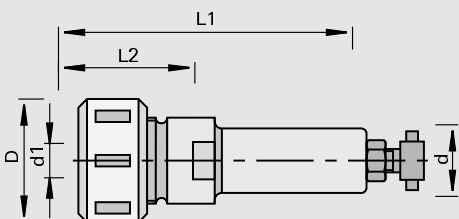
933250

Draw-In Collet Chucks with cylindrical shank

product



drawing

LEUCO
GNC

Machine / Application

for mounting of shank-type tools in PS 2000-E

Design

for shank diameter 2-16 mm
collet chucks DIN 6388 Type 415 E
lock nut with sleeve bearing

Advantages

Notes

for clockwise and counter-clockwise rotation
length adjusting screw Ident-No. 172921 is required for PS 2000-E
included in delivery: collet chuck adapter with nut and length adjusting screw for PS-System for shank \varnothing 16 Ident-No. 172115, shank \varnothing 25 Ident-No. 172113

$\varnothing D$	$\varnothing d$	$\varnothing d_{1min}$	L2	L1	Ident-No.
43	16	2-16	50	95	170181
43	25	2-16	50	105	170182
[mm]	[mm]	[mm]	[mm]	[mm]	

spare parts	Dimension	Class-No.	Ident-No.
ball-bearing lock nuts	M30x1,5R	995290	178763
Hook Wrenches	SW40/42 DIN 1810	985720	169298
Engineers Wrenches	24x27 DIN 3110 [mm]	985730	009193 o

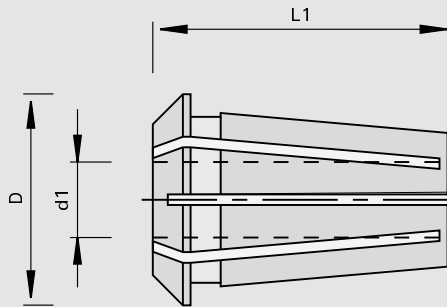
933280

Precision Collets

product



drawing



LEUCO
CNC

Machine / Application

l for use in draw-in collet chucks
Type 415 E

Design

l slotted from top and bottom
l clamping tolerance 0.5 mm
l according to DIN 6388 415E

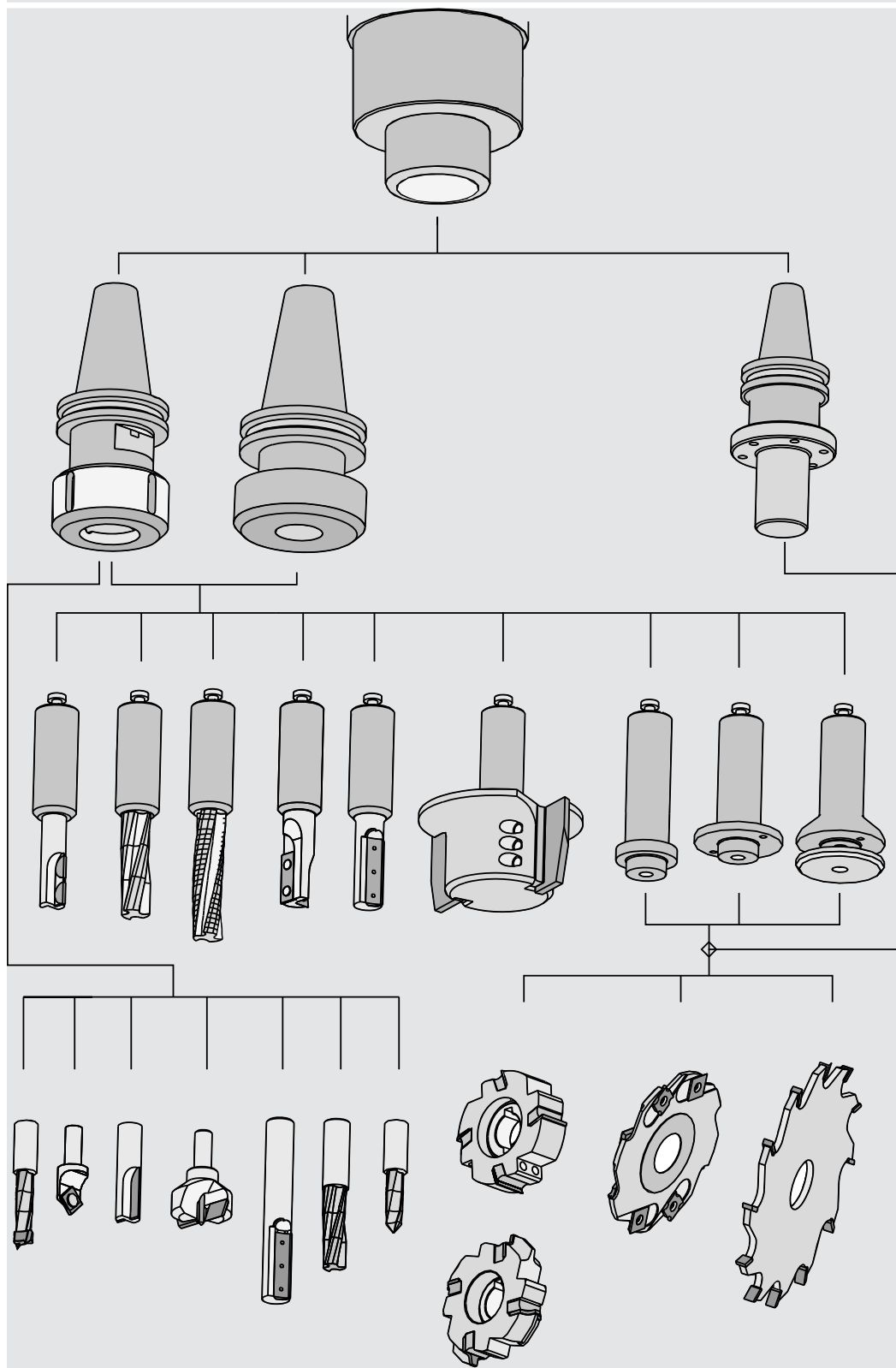
Advantages

Notes

l for Ident-No. 170181,
170182

Ø D	Ø d1min	L1	Ident-No.
25.5	2,5	40	820753 o
25.5	3	40	820754 o
25.5	4	40	820494 o
25.5	4,5	40	830236 o
25.5	5	40	820495 o
25.5	6	40	170779
25.5	6,35	40	821421 o
25.5	7	40	829692 o
25.5	8	40	170780
25.5	9	40	825190 o
25.5	9,5	40	168739 o
25.5	10	40	170781
25.5	12	40	168740
25.5	12,7	40	830156 o
25.5	13	40	821221 o
25.5	16	40	168741
[mm]	[mm]	[mm]	

Chart Tool Holders machine interface SK- and BT-Mounting



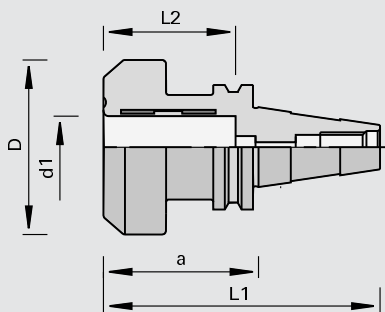
933240

Hydro Clamping Chucks PS 2000-E

product



drawing



LEUCO
CNC

Machine / Application

- for CNC machining centers with automatic tool changer
- for precise clamping of shank-type tools with cylindrical shank

Design

- for n max = 25,000 min -1
- for quick-release taper BT 30 and quick-release taper BT 35 with retaining bolt according to standard MAS 403
- for quick-release taper SK 30 according to ISO 7388-3 (without retaining bolt - must be ordered separately)
- for quick-release taper SK 30 and SK 40 according to DIN 69871A (with retaining bolt)

Advantages

- for minimization of setup-times thanks to easy and quick tool change
- for high cutting quality and long edge lives thanks to high concentricity

Notes

- for clockwise and counter-clockwise rotation

Ø D	Ø d	Ø d1min	L2	L1	a	weight	Ident-No.
70	SK 30 (ISO)25		55	111	63	1.1	CMS
70	SK 30 (DIN)	25	55	111	63	1.1	IMA, Maka, Biesse, Reichenbacher, Weeke
70	SK 40 (DIN)	25	55	128	60	1.39	IMA, Maka, Reichenbacher, Stegherr
70	BT 35	25	55	120	63	1.25	Heian
[mm]	[mm]	[mm]	[mm]	[mm]	[mm]	[kg]	

Retaining Bolts

mach.

Class-No.

Ident-No.

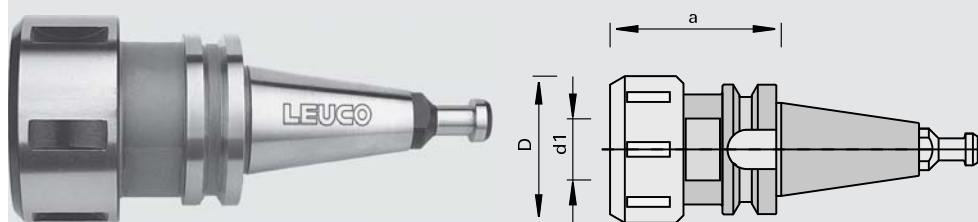
for SK 30	DIN 69872 A	IMA, Maka, Reichenbacher, Weeke	997870	169293
for SK 40	DIN 69872 A	IMA, Reichenbacher, Stegherr	997870	169294
for SK 30	ISO 7388-3	CMS, Masterwood	997870	177021
for SK 30		Rover old, Biesse up to 08/92	997870	175637
for SK 30		Rover new, Biesse (HSD motor) from 09/92, Masterwood (Colombo motor)	997870	173641
for SK 30	ISO 7388-3	Alberti	997870	177020
for BT 35	PT 35T-2	Heian	997870	176103

933289

Draw-In Collet Chucks with SK shank

product

drawing

LEUCO
CNC

Machine / Application

- l CNC machining centers with automatic tool changer
- l for clamping of shank-type tools with cylindrical shank

Design

- l quick-release taper according to DIN 69871 resp. ISO 7388-3 (without dog and locating grooves)
- l quick-release taper according to Japanese standard MAS - 403 (for Ident-No. 176102)
- l lock nut with sleeve bearing (except for Ident-No. 177304 with ball bearing)

Advantages

- l minimization of setup-times thanks to easy and quick tool changehigh cutting quality and long edge lives thanks to high concentricity

Notes

- l for clockwise and counter-clockwise rotation
- l included in delivery:collet chuck, clamping nut and retaining bolt

Ø D	Ø d	norm number	Ø d1min	a			Ident-No.
43	SK 30 (DIN)	415 E	2-16	55	SW 41	Weeke	177304 o
60	SK 30 (DIN)	462 E	2-25	70	SW 41	IMA, Maka, Reichenbacher	173794
50	SK 30 (ISO)	470 E	2-20	58	SW 41	CMS	180360 o
60	SK 40 (DIN)	462 E	2-25	70	SW 46	IMA, Maka, Stegherr, Reichenbacher	173795
60	BT 35	462 E	2-25	70	SW 41	Heian	176102
[mm]	[mm]		[mm]	[mm]			

spare parts

Class-No.

Ident-No.

ball-bearing lock nuts	M30x1,5R	for Ø D = 43	995290	178763
lock nut with sleeve bearing	M48x2R	for Ø D = 60	995290	178764
Retention knobs	DIN 69872 A	for SK 30	997870	169293
Retention knobs	DIN 69872 B	for SK 40	997870	179339
Retention knobs	ISO 7388-3	for SK 30	997870	177021
Retention knobs	PT 35T-2	for BT 35	997870	176103
Hook Wrenches	SW58/62 DIN 1810	for Ø D = 60	985720	169299
Hook Wrenches	SW40/42 DIN 1810	for Ø D = 43	985720	169298
Single-Head Engineers Wrenches	SW46x10 DIN 894		985720	178760
Single-Head Engineers Wrenches	SW41 DIN 894		985720	169297
	[mm]			

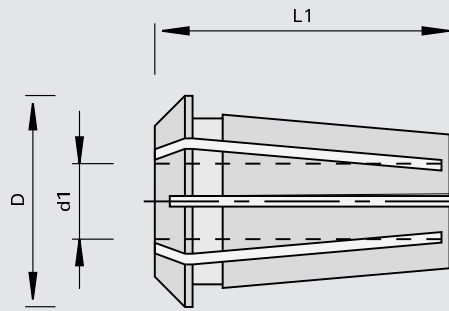
933280

Precision Collets

product



drawing



LEUCO
GVC

Machine / Application

for use in draw-in collet chuck
Type 462 E

Design

clamping tolerance 0.5 mm
according to DIN 6388 Type
462E

Advantages

optimum transmission of
clamping force thanks to 12
slots from top and bottom

Notes

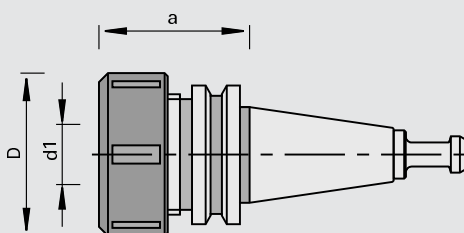
Ø d1min	Ø d1min	Ø D	L1	Ident-No.
2		34.8	52	183803 o
3		34.8	52	183804 o
4		34.8	52	183805
5		34.8	52	183806 o
6		34.8	52	180213
	1/4	34.8	52	175815
7		34.8	52	183807 o
8		34.8	52	180358
9,5		34.8	52	175817
10		34.8	52	170782
12		34.8	52	168742
	1/2	34.8	52	175820
13		34.8	52	180215
14		34.8	52	170783
	5/8	34.8	52	175823
15		34.8	52	183808 o
16		34.8	52	168743
18		34.8	52	180216
	3/4	34.8	52	175826
20		34.8	52	168744
25		34.8	52	168745
[mm]	[inch]	[mm]	[mm]	

933289

Draw-In Collet Chucks with SK shank

product

drawing


LEUCO
CNC

Machine / Application

- | CNC machining centers with automatic tool changer
- | for clamping of shank-type tools with cylindrical shank

Design

- | quick-release taper according to DIN 69871 and ISO (without dog and locating grooves)
- | lock nut with sleeve bearing

Advantages

- | minimization of setup-times thanks to easy and quick tool change
- | high cutting quality and long edge lives thanks to high concentricity

Notes

- | for clockwise and counter-clockwise rotation
- | collet chucks according to Type 470 E Ø 2..20 mm
- | collet chucks according to Type 472 E Ø 4..25 mm
- | included in delivery: collet chuck, clamping nut and retaining bolt

Ø D	Ø d	Ø d1 min	a	type		Ident-No.
50	SK 30 (DIN)	2-20	50	470 E	Biesse	173639
63	SK 30 (DIN)	4-25	57	472 E	Biesse	175790
63	SK 30 (ISO)	4-25	64	472 E	CMS	180361
[mm]	[mm]	[mm]	[mm]			

spare parts

Dimension

Class-No.

Ident-No.

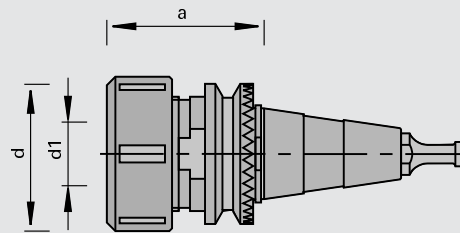
Lock Nuts	M40x1,5R	for Ø D = 50	995290	178761
lock nuts with sleeve bearing	M50x1,5R	for Ø D = 63	995290	178762 o
Retention knobs		HSD motor for Biesse as from 09/92	997870	173641
Retention knobs		for Biesse up to 08/92	997870	175637
Retention knobs	ISO 7388-3	for SK 30	997870	177021
Hook Wrenches	SW45/50 DIN 1810	for Ø D = 50	985720	175851
Hook Wrenches	SW58/62 DIN 1810	for Ø D = 63	985720	169299
	[mm]			

933289

Draw-In Collet Chucks with SK shank

product

drawing



LEUCO
CNC

Machine / Application

- | CNC machining centers with automatic tool changer
- | for clamping of shank-type tools with cylindrical shank

Design

- | quick-release taper according to SK 30 with ring gear
- | lock nut with sleeve bearing

Advantages

- | minimization of setup-times thanks to easy and quick tool change
- | high cutting quality and long edge lives thanks to high concentricity

Notes

- | for clockwise and counter-clockwise rotation
- | replaceable retaining bolt
- | collet chucks according to Type 462 E Ø 4..25 mm
- | collet chucks according to Type 470 E Ø 2..20 mm
- | included in delivery: collet chuck, clamping nut and retaining bolt

Ø D	Ø d	Ø d1min	a	type		Ident-No.
50	SK 30	2-20	55	470 E	SCM, Morbidelli	173644
60	SK 30	4-25	72	462 E	SCM, Morbidelli	175792
[mm]	[mm]	[mm]	[mm]			

spare parts	Dimension		Class-No.	Ident-No.
Lock Nuts	M40x1,5R	for Ø D = 50	995290	178761
lock nut with sleeve bearing	M48x2R	for Ø D = 60	995290	178764
Retention knobs	Ø8,5		997870	173646
Hook Wrenches	SW45/50 DIN 1810	for Ø D = 50	985720	175851
Hook Wrenches	SW58/62 DIN 1810	for Ø D = 60	985720	169299
Single-Head Engineers Wrenches	SW36 DIN 894	for Ø D = 50	985720	169296 o
Single-Head Engineers Wrenches	SW46x10 DIN 894	for Ø D = 60	985720	178760
	[mm]			

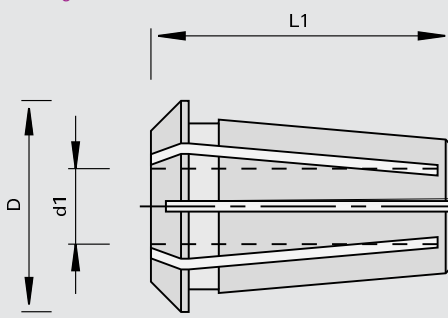
933280

Precision Collets

product



drawing

LEUCO
CNC

Machine / Application

for use in draw-in collet chuck
Type 430 E / 470 E / 472 E

Design

slotted from top and bottom
clamping tolerance 1 mm

Advantages

Notes

Type 430 E (ER 25) 6 - 16 mm
for special chuck
Type 470 E (ER 32) 3 - 20 mm
Type 472 E (ER 40) 6 - 25 mm

Ø D	Ø d1min	Ø d1min	L1	type	Ident-No.
33	3		40	470 E	173647 o
33	4		40	470 E	173648 o
33	5		40	470 E	173649 o
33	6		40	470 E	173650 o
33	7		40	470 E	173651 o
33	8		40	470 E	173652
33	10		40	470 E	173653
33	12		40	470 E	173654
33	13		40	470 E	173655 o
33	14		40	470 E	173656 o
33	16		40	470 E	173657
33	18		40	470 E	173658 o
33	19		40	470 E	173659 o
33	20		40	470 E	173660
33		1/4	40	470 E	175829
33		1/2	40	470 E	175830
33		5/8	40	470 E	175831 o
33		3/4	40	470 E	175832 o
41	6		46	472 E	180912 o
41	8		46	472 E	180913 o
41	10		46	472 E	180914 o
41	12		46	472 E	175833
41	16		46	472 E	175834
41	18		46	472 E	175835 o
41	20		46	472 E	175836
41	25		46	472 E	175837
41		1/4	46	472 E	175838 o
41		1/2	46	472 E	175839 o
41		5/8	46	472 E	175840 o
41		3/4	46	472 E	175841 o
41		1	46	472 E	175842 o
26	6		34	430 E	181986 o
26	8		34	430 E	181987 o
26	10		34	430 E	181988
26	12		34	430 E	181989 o
26	14		34	430 E	181990 o
26	16		34	430 E	181991 o
[mm]	[mm]	[inch]	[mm]		

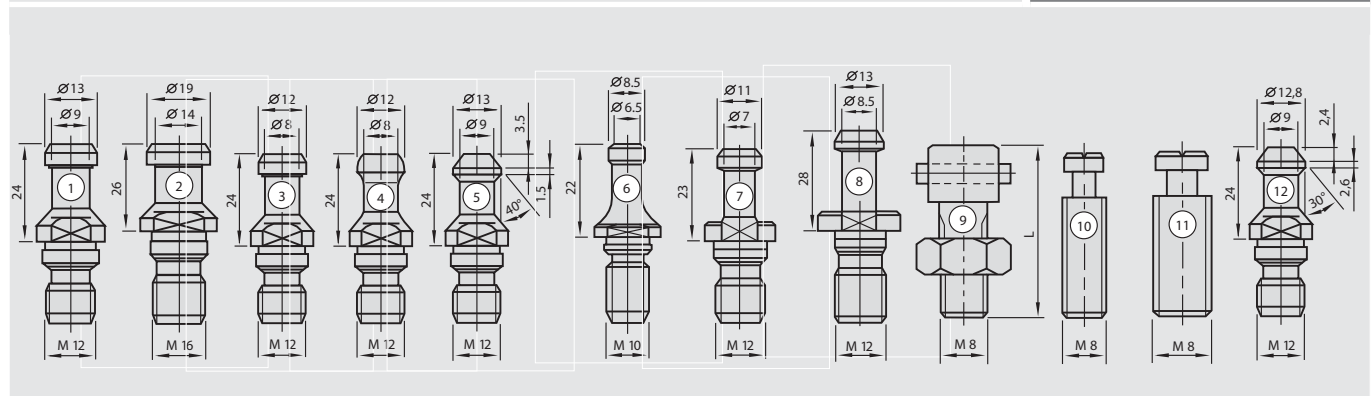


997870

Retaining Bolts

product

drawing



Machine / Application

Design

Advantages

Notes

for use in Hydro clamping
chuck PS 2000-E, adapter and
draw-in collet chuck with SK +
BT-shank

	norm number	type		Ident-No.
for SK 30	DIN 69872 A	1	IMA, Maka, Reichenbacher, Weeke	169293
for SK 40 with ventilation	DIN 69872 A	2	IMA, Reichenbacher, Stegherr	169294
for SK 40	DIN 69872 B	2	IMA, Reichenbacher, Stegherr, Maka	179339
for SK 30		3	Rover old, Biesse up to 08/92	175637
for SK 30		4	Rover new, Biesse (HSD motor) from 09/92, Masterwood (Colombo motor)	173641
for SK 30	ISO 7388-3	5	Alberti	177020
for SK 30 (ISO)	ISO 7388-3	12	CMS, Masterwood	177021
retaining bolt Ø 8.5 mm		6	Morbidelli, SCM	173646
for BT 30	P 30T-2	7	Shoda	176200
for BT 35	PT 35T-2	8	Heian	176103
stop screw		9	PS-System	172113
stop screw		10	PS 2000-E	172921
stop screw		11	draw-in collet chuck	172828

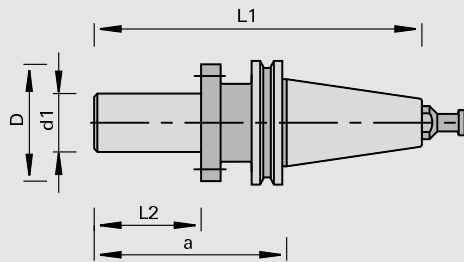
997300

Adapters with SK shank

product



drawing

LEUCO
CNC

Machine / Application

- l CNC machining centers with automatic tool changer
- l for precise mounting of tools with bore

Design

- l clamping length $L2 = 50$ mm for multiple-part cutters and cutterheads
- l quick-release taper according to DIN 69871 (without dog and locating grooves)
- l tool attached and secured against rotation with screws

Advantages

Notes

- l for clockwise and counter-clockwise rotation
- l with retaining bolt according to DIN 69872 for SK 30 type A, SK 40 type B
- l machines SK 30: IMA, Maka, Reichenbacher, Weeke
- l machines DK 40: IMA, Maka, Reichenbacher, Stegherr

$\varnothing D$	$\varnothing d$	$\varnothing d_{1min}$	L2	L1	a	NL	Ident-No.
60	SK 30	25	55	147.8	100	6/M6/48	168800 #
60	SK 30	30	55	147.8	100	2/M6/48+2/6/48	182167 o
60	SK 40	30	55	168.4	100	2/M6/48+2/6/48	182168 o
[mm]	[mm]	[mm]	[mm]	[mm]	[mm]		

spare parts

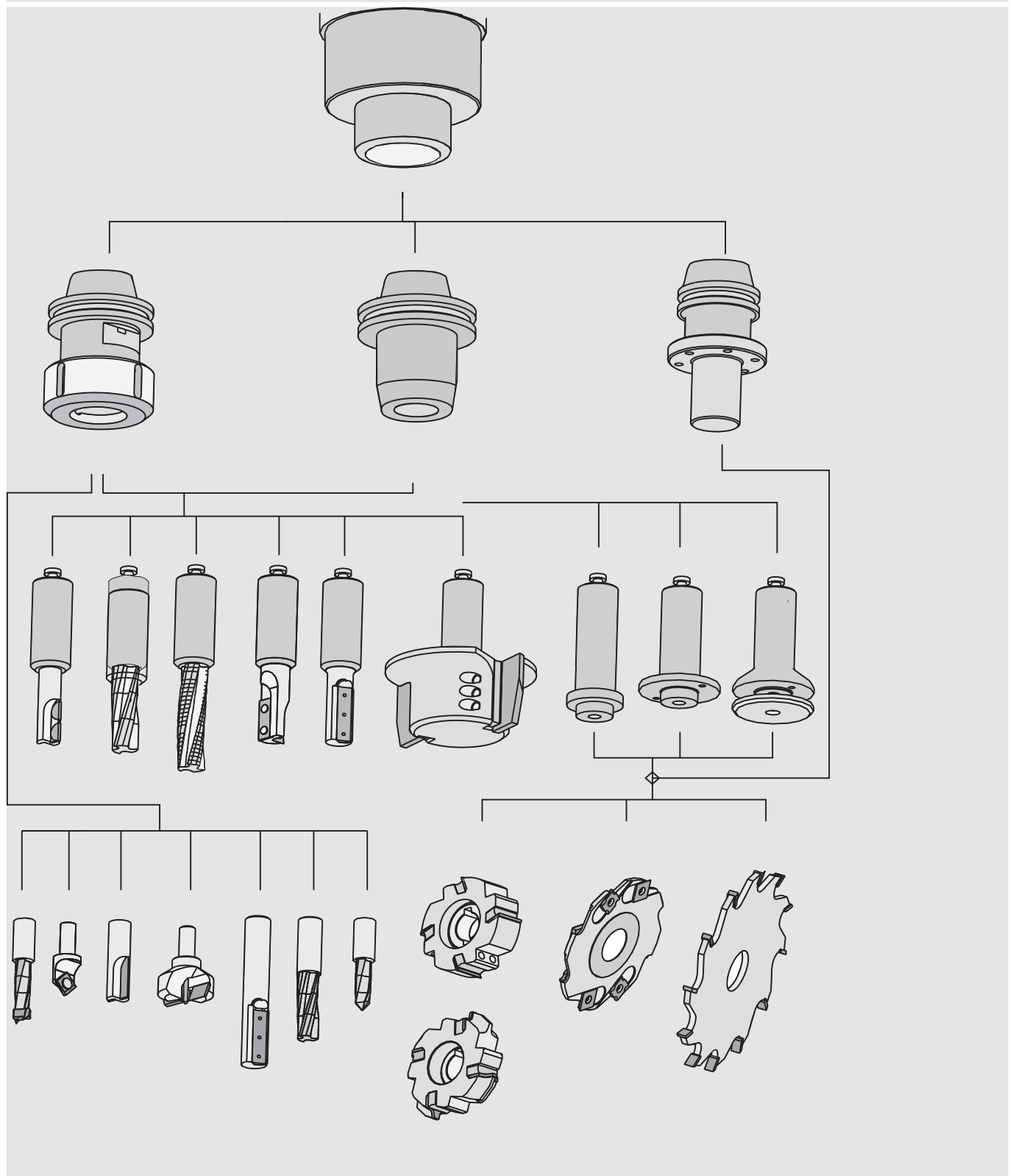
Class-No.

Ident-No.

Retention knobs	DIN 69872 A	for SK 30	997870	169293
Retention knobs	DIN 69872 B	for SK 40	997870	179339



Chart Tool Holders machine interface HSK-Mounting



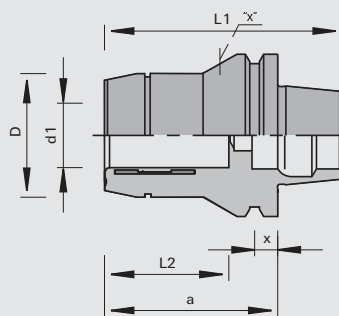
933240

Hydro Clamping Chucks PS-System with HSK 63 F shank

product



drawing


LEUCO
 PS-System

Machine / Application

| CNC machining centers with automatic tool changer
 | for precise clamping of shank-type tools with cylindrical shank

Design

| n max = 30,000 min⁻¹
 | interface DIN 69893 HSK 63 F

Advantages

| minimization of setup-times thanks to easy and quick tool change
 | high cutting quality and long edge lives thanks to high concentricity
 | optimum torque transfer

Notes

| for right- and lefthand rotation
 | with bore for installation of micro chips for electronic tool detection
 | x = impingement by means of screwdriver
 | hexagonal screwdriver SW5 is not included in delivery

Ø d1min	L2	Ø d	Ø D	L1	a	x	weight	Ident-No.
12	47,5	HSK 63F	32	105	80	18	1.16	184019
16	50,5	HSK 63F	38	105	80	18	1.20	184020
20	52,5	HSK 63F	50	105	80	18	1.30	184021
25	58,5	HSK 63F	53	105	80	18	1.28	184022
[mm]	[mm]	[mm]	[mm]	[mm]	[mm]	[mm]	[kg]	

spare parts

Dimension

Class-No.

Ident-No.

Screwdrivers

 SW5x150
 [mm]

985730

168703



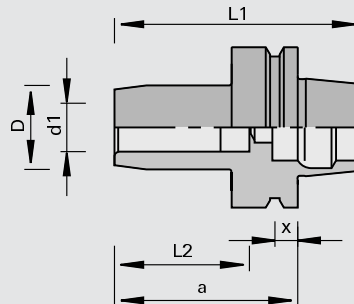
933299

Tribos Pressure Shrinking Chucks

product



drawing



LEUCO
CNC

Machine / Application

- l CNC machining centers with automatic tool changer
- l for precise clamping of shank-type tools with cylindrical shank

Design

- l n max = 40,000 min-1

Advantages

- l low weight is easy on machine bearing
- l suitable for high RPM's
- l optimum chip extraction thanks to slim design
- l increased process safety, long edge lives and high machining quality thanks to very high concentricity and repeating accuracy (< 0.003 mm)

Notes

- l for right- and lefthand rotation
- l different diameters upon request
- l allowed projection: 4 x d1
- l clamping of the tools by means of the clamping device
- l can also be done at LEUCO upon request
- l Tribos chuck with reinforced design especially for heavy roughing can be delivered upon request
- l delivery without retaining bolts; please choose retaining bolts according to the machine (see page with retaining bolts)

Ø d1min	L2	Ø d	Ø D	L1	a	x	weight	Ident-No.
12	48,5	HSK 63F	19	100	75	18	0.69	180257
16	48,5	HSK 63F	26	100	75	18	0.74	180899
20	52,9	HSK 63F	30	100	75	18	0.77	180258
25	55	HSK 63F	35	100	75	18	0.79	180710
[mm]	[mm]	[mm]	[mm]	[mm]	[mm]	[mm]	[kg]	

Ø d1min	L2	Ø d	Ø D	L1	a	Ident-No.
20	55	SK 30 (DIN)	30	127	80	180888
25	55	SK 30 (DIN)	35	127	80	180836
[mm]	[mm]	[mm]	[mm]	[mm]	[mm]	

spare parts

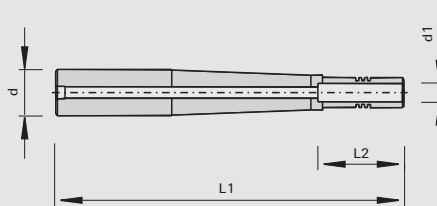
	Class-No.	Ident-No.
Mounting Devices (manual)	985201	180261
Mounting Devices (automatic)	985201	181159 o
Adjustment Inserts for Ø d = 6	955530	183719 o
Adjustment Inserts for Ø d = 8	955530	183720 o
Adjustment Inserts for Ø d = 10	955530	183721 o
Adjustment Inserts for Ø d = 12	955530	180263
Adjustment Inserts for Ø d = 16	955530	180902
Adjustment Inserts for Ø d = 20	955530	180264
Adjustment Inserts for Ø d = 25	955530	180711
Length Adjusting Gauges without interface cable	985300	180828 o
Interface Cables for Adjusting Gauges for RS 232C interface	985300	180829 o

933299

Tribos extension

product

drawing



LEUCO
CNC

Machine / Application

for mounting of shank-type tools with cylindrical shank in Sino, Tribos, PS 2000-E

Design

shank diameter tolerance h7 or g7

Advantages

Notes

minimum clamping length = L2
clamping and unclamping of the tools with Tribos clamping device

Ø d1min	L2	Ø d	L1	Ident-No.
6	27	20	100	182800 o
8	27	20	100	182801 o
10	32	20	100	182802 o
12	37	20	100	182803 o
6	27	20	150	182804 o
8	27	20	150	182805 o
10	32	20	150	182806 o
12	37	20	150	182807 o
6	27	20	250	182808 o
8	27	20	250	182809 o
10	32	20	250	182810 o
12	37	20	250	182811 o
[mm]	[mm]	[mm]	[mm]	

spare parts

Class-No.

Ident-No.

Adjustment Inserts	for Ø d = 6	955530	183719 o
Adjustment Inserts	for Ø d = 8	955530	183720 o
Adjustment Inserts	for Ø d = 10	955530	183721 o
Adjustment Inserts	for Ø d = 12	955530	180263

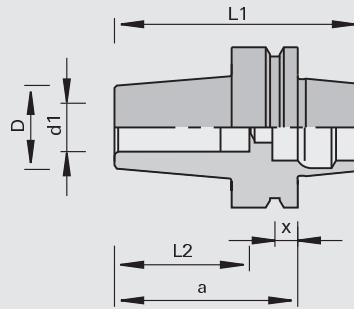
933299

Heat-Shrinking Chucks

product



drawing



LEUCO
GNC

Machine / Application

- | CNC machining centers with automatic tool changer
- | for precise clamping of shank-type tools with cylindrical shank

Design

- | n max = 25,000 min-1
- | interface DIN 69893 HSK 63 F
- | from high-quality hot work tool steel

Advantages

- | increased process safety, long edge lives and high machining quality thanks to very high concentricity and repeating accuracy (< 0.003 mm)

Notes

- | for clockwise and counter-clockwise rotation
- | can be clamped and unclamped with all conventional shrinking devices

Ø d 1min	L2	Ø d	Ø D	L1	a	x	weight	Ident-No.
10	41	HSK 63F 24	101	76	18	840	183081	
12	46	HSK 63F 24	101	76	18	830	183082	
14	46	HSK 63F 24	101	76	18	870	183083	
16	49	HSK 63F 27	101	76	18	850	183084	
18	49	HSK 63F 33	101	76	18	960	183085	
20	51	HSK 63F 33	101	76	18	930	183086	
25	57	HSK 63F 44	101	76	18	860	183087	
[mm]	[mm]	[mm]	[mm]	[mm]	[mm]	[mm]	[kg]	

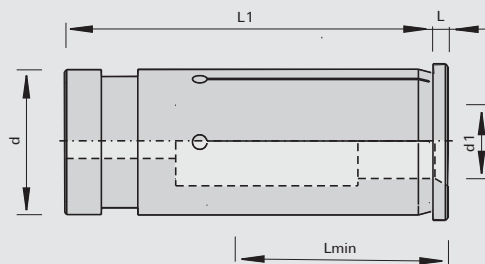
933280

Universal Reducing Bushings

product



drawing



LEUCO
CNC

Machine / Application

for mounting of shank-type tools in Sino, Tribos, PS-System

Design

shank diameter tolerance h7 or g7

Advantages

Notes

Ø d1min	Ø d1min	Lmin	Ø d	L1	Ident-No.
3		27	12	45	183022 o
4		27	12	45	183023 o
5		27	12	45	183024 o
6		27	12	45	183025
8		27	12	45	183026
3		27	20	50.5	183027 o
4		27	20	50.5	183028 o
5		27	20	50.5	183029 o
6		27	20	50.5	183030 o
7		27	20	50.5	183031 o
8		27	20	50.5	183032
9		27	20	50.5	183033 o
10		32	20	50.5	183034
11		37	20	50.5	183035 o
12		37	20	50.5	183036
13		37	20	50.5	183037 o
14		37	20	50.5	183038 o
15		38	20	50.5	183039 o
16		38	20	50.5	183040
17		38	20	50.5	183041 o
6		27	25	56.5	182304 o
8		27	25	56.5	182305
10		32	25	56.5	182306
12		37	25	56.5	182307
14		37	25	56.5	182308 o
16		38	25	56.5	182309
18		38	25	56.5	182310
20		42	25	56.5	182311
	1/2	37	25	56.5	182653
	5/8	38	25	56.5	182654 o
	3/4	42	25	56.5	182655 o
[mm]	[inch]	[mm]	[mm]	[mm]	



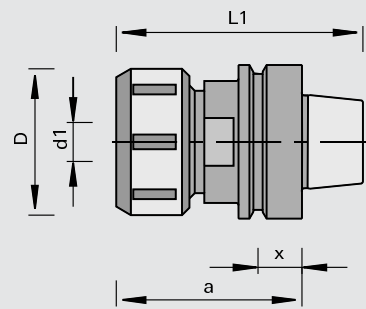
933289

Draw-In Collet Chucks with HSK shank

product



drawing



LEUCO
CNC

Machine / Application

- | CNC machining centers with automatic tool changer
- | for precise clamping of shank-type tools with cylindrical shank

Design

- | interface according to DIN 69893 HSK 50F, HSK 63F and HSK 63E
- | lock nut with sleeve bearing

Advantages

- | flexible utilization by collet chucks

Notes

- | for clockwise and counter-clockwise rotation
- | Ident-No. 175795 for IMA (up to 12/94) similar to DIN 69893
- | $\varnothing d1$ = collet chuck diameter 2 - 25 mm
- | collet chucks according to DIN 6388: 1) Type 462E / 2) Type 472E
- | included in delivery: collet chuck, clamping nut without spanner wrench

$\varnothing d1_{min}$	$\varnothing d$	$\varnothing D$	L1	a	x	type	Ident-No.	
2-25	HSK 63F	60	101	76	18	1	Homag, IMA from 01/95, Weeke from 03/98, HOLZ-HER, SCM	173293
2-25	HSK 63E	63	103	78	18	2	CMS	180359 o
2-25	HSK 63F	60	101	76	9	1	IMA up to 12/94	175795
2-25	HSK 63F	60	140	115	18	1	Homag, IMA from 01/95, Weeke from 03/98, HOLZ-HER	179170
[mm]	[mm]	[mm]	[mm]	[mm]	[mm]			

spare parts

Dimension

Class-No.

Ident-No.

lock nut with sleeve bearing	M48x2R	995290	178764
Hook Wrenches	SW58/62 DIN 1810	985720	169299
Single-Head Engineers Wrenches	SW46x10 DIN 894	985720	178760
	[mm]		

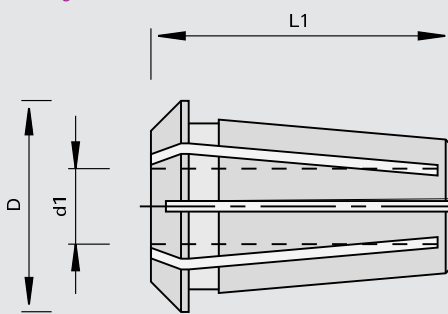
933280

Precision Collets

product



drawing



LEUCO
CNC

Machine / Application

for use in draw-in collet chuck
Type 462 E

Design

clamping tolerance 0.5 mm
according to DIN 6388 Type
462E

Advantages

optimum transmission of
clamping force thanks to 12
slots from top and bottom

Notes

Ø d1min	Ø d1min	Ø D	L1	Ident-No.
2		34.8	52	183803 o
3		34.8	52	183804 o
4		34.8	52	183805
5		34.8	52	183806 o
6		34.8	52	180213
	1/4	34.8	52	175815
7		34.8	52	183807 o
8		34.8	52	180358
9,5		34.8	52	175817
10		34.8	52	170782
12		34.8	52	168742
	1/2	34.8	52	175820
13		34.8	52	180215
14		34.8	52	170783
	5/8	34.8	52	175823
15		34.8	52	183808 o
16		34.8	52	168743
18		34.8	52	180216
	3/4	34.8	52	175826
20		34.8	52	168744
25		34.8	52	168745
[mm]	[inch]	[mm]	[mm]	

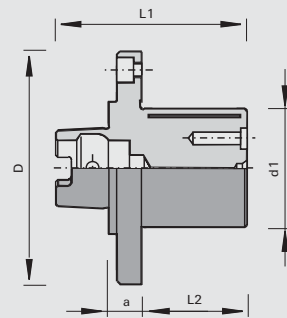


933231

Hydro Tensile Spindles HSK 63 F modified

product

drawing



Machine / Application

- | through feed machines
- | especially for flooring manufacturing
- | for precise clamping of tools with bore

Design

- | with hydro-tensile spindle
- | clamping length L2 = 68 mm e.g. for adjustment unit
- | interface DIN 69893 HSK 63 F for highly precise mounting on the machine spindle

Advantages

- | precise mounting of tools with bore thanks to hydro-tensile spindle

Notes

- | for clockwise and counter-clockwise rotation

Ø D	Ø d	Ø d1min	L2	L1	a	NL	Ident-No.
[mm]	[mm]	[mm]	[mm]	[mm]	[mm]		
120	HSK 63F	60	68	113	20	4/M8/80 + 4/9/80	183617 o

spare parts

Dimension

Class-No.

Ident-No.

Cutter Retaining Bolts	M8x58,5 DIN 7984	995111	180049
Cutter Retaining Bolts	M8x88,5 DIN 7984	995111	180050
Rubber Rings	8x13x2 [mm]	955510	180051

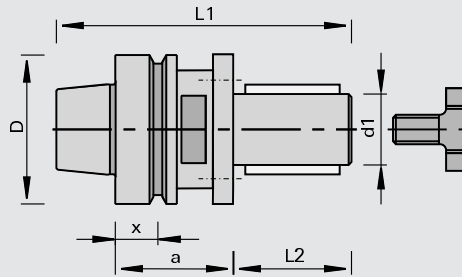
997300

Mounting Arbors with HSK shank

product



drawing

LEUCO
CNC

Machine / Application

- l CNC machining centers with automatic tool changer
- l for precise mounting of tools with bore with double keyway

Design

- l with 6 pin holes M6 - 8 mm deep TK 48 mm
- l interface DIN 69893 HSK 63 F
- l clamping length L2 = 50 mm for multiple-part cutters and cutterheads
- l secured against rotation with double key

Advantages

- l high feed rates thanks to optimum torque transfer

Notes

- l for clockwise and counter-clockwise rotation
- l spacer ring Ident-No. 181193 consists of: 1 piece 20 mm thick, 1 piece 10 mm thick, 3 piece 5 mm thick, 2 piece 2 mm thick, 1 piece 1 mm thick
- l spacer ring set Ident-No. 181194 additionally 1 piece 20 mm thick, 1 piece 10 mm thick
- l tool attached with retaining bolt
- l included in delivery: clamping arbor with retaining bolt

Ø D	Ø d	Ø d1min	L2	L1	a	x	DKN		Ident-No.
63	HSK 63F	30	50	125	50	18	8 x 3	Homag, IMA from 01/95	178693 #
63	HSK 63F	30	50	120	45	18	8 x 3	Homag, IMA from 01/95	183748
63	HSK 63F	30	80	155	50	18	8 x 3	Homag, IMA from 01/95, HOLZ-HER	178641 #
63	HSK 63F	30	80	150	45	18	8 x 3	Homag, IMA from 01/95, HOLZ-HER	183749
63	HSK 63F	30	110	180	45	18	8 x 3	Homag, IMA from 01/95, HOLZ-HER	183747
[mm]	[mm]	[mm]	[mm]	[mm]	[mm]	[mm]	[mm]		

spare parts

Dimension

Class-No.

Ident-No.

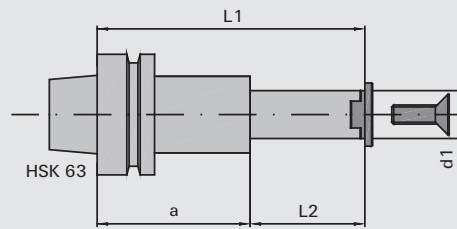
Single-Head Engineers Wrenches	SW46x10 DIN 894	985720	178760
Cutter Retaining Bolts	M16x26xØ42	995190	173592
Spacer Sets	60x50x30	955521	181193
Spacer Sets	60x80x30	955521	181194
	[mm]		

997300

Mounting Arbors HSK 63F

product

drawing

LEUCO
CNC

Machine / Application

l CNC machining centers with automatic tool changer
l for mounting of Modula sets or single cutters

Design

l interface DIN 69893 HSK 63 F
l secured against rotation with double key

Advantages

Notes

l for right- and lefthand rotation
l included in delivery: mounting arbor with cover and countersunk screw

Ø d	Ø d1min	L2	L1	a	Ident-No.
HSK 63F	25	37	119	50	183768
HSK 63F	25	85	167	50	183769
HSK 63F	25	37	149	80	183770
HSK 63F	25	75	187	80	183771
[mm]	[mm]	[mm]	[mm]	[mm]	

accessories

Dimension

Class-No.

Ident-No.

Spacers	40x0,1x25	955520	183756
Spacers	40x0,2x25	955520	183757
Spacers	40x0,5x25	955520	183758
Spacers	40x1x25	955520	183759
Spacers	40x2x25	955520	183760
Spacers	40x4x25	955520	183761
Spacers	40x6x25	955520	183762
Spacers	40x10x25	955520	183763
Spacers	40x20x25	955520	183764
	[mm]		

spare parts

Dimension

Class-No.

Ident-No.

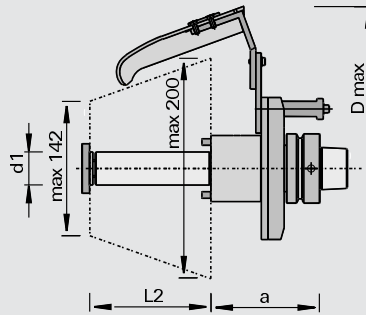
Covers	33x11x25	997300	183772 o
Countersunk Flat Headed Screws	M10x30 DIN EN ISO 10642	995121	183773 o
Screwdrivers	SW6x200	985730	167817
	[mm]		

997300

Milling Assemblies with chip directing steel sheet

product

drawing

LEUCO
CNC

Machine / Application

- | CNC-machining centers with C-axis Homag
- | for precise mounting of tools with bore

Design

- | milling aggregate with integrated chip directing steel sheet
- | Ident-No. 182049 and 182050 with double keyway
- | Ident-No. 182075 and 182076 with lid and retaining bolt; 2 carrier pins Ø6 TK 48
- | n max = 11,000 min-1 (stock design)
- | shank 30 mm, shank length 105 mm

Advantages

- | optimized chip removal

Notes

- | weight of the component approx. 2 kg (depending on design)
- | max. weight of the clamped tool 3,8 kg

Ø Dmax	Ø d	Ø d1min	L2	a	DKN		Ident-No. [L]	Ident-No. [R]
300	HSK 63F	30	105	80	8 x 4	Homag	182049 o	182050 o
300	HSK 63F	30	105	80		Homag	182075 o	182076 o
[mm]	[mm]	[mm]	[mm]	[mm]	[mm]			

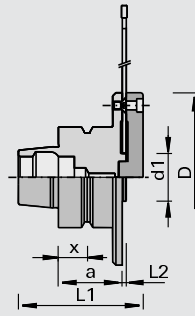


997300

Saw Blade Adapters HSK 63F modified

product

drawing



LEUCO
CNC

Machine / Application

- for CNC machining centers with automatic tool changer
- for precise mounting of circular saw blades

Design

- interface DIN 69893 HSK 63 F for high-precision adapter to the machine spindle

Advantages

Notes

- for clockwise and counter-clockwise rotation
- mounting of the saw directly by means of countersunk screw or lid by means of cylinder head screw
- included in delivery: lid, countersunk screws and cylinder head screw

$\varnothing D$	$\varnothing d$	$\varnothing d_{1min}$	L2	L1	a	x	NL	Ident-No.
106	HSK 63F	30	2,5	78	40	18	8/M5/90	182174
[mm]	[mm]	[mm]	[mm]	[mm]	[mm]	[mm]		

spare parts

Dimension

Class-No.

Ident-No.

Countersunk Flat Headed Screws

M5x8 T20

995125

164005

Head Cap Screws

M5x16 DIN EN ISO 4762
[mm]

995111

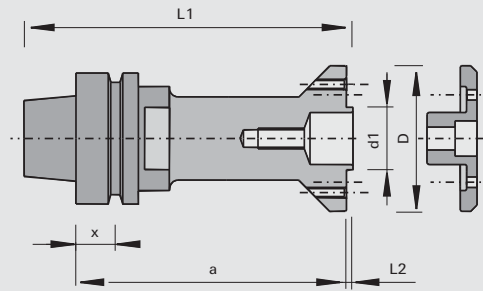
001870

933069

Saw Blade Adapters HSK 63F modified

product

drawing

LEUCO
CNC

Machine / Application

- for CNC machining centers with automatic tool changer
- for precise mounting of circular saw blades and grooving cutters

Design

- interface DIN 69893 HSK 63 F for high-precision adapter to the machine spindle

Advantages

Notes

- for clockwise and counter-clockwise rotation
- mounting of the saw directly by means of countersunk screw or lid 183310 by means of cylinder head screw
- included in delivery:
 - adapter with countersunk screws
 - lid with cylinder head screws

Ø D	Ø d	Ø d1min	L2	L1	a	NL	Ident-No.
70	HSK 63F	30	2,5	157,5	130	8/M5/52	183309
[mm]	[mm]	[mm]	[mm]	[mm]	[mm]		

spare parts

Dimension

Class-No.

Ident-No.

Countersunk Flat Headed Screws	M5x8 T20 [mm]	995125	164005
--------------------------------	------------------	--------	--------

accessories

Dimension

Class-No.

Ident-No.

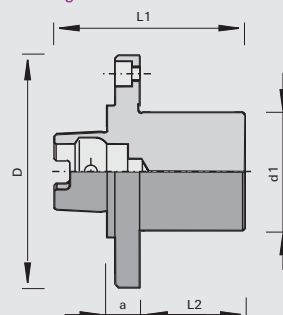
lid with cylinder head screws	70x24x8 [mm]	997300	183310
-------------------------------	-----------------	--------	--------

933061

Mounting Arbors HSK 63F modified

product

drawing



Machine / Application

- for through-feed machines with tool changer Homag
- especially for flooring manufacturing
- for precise clamping of tools with bore

Design

- interface DIN 69893 HSK 63 F modified for highly precise mounting on the machine spindle

Advantages

- quick tool change

Notes

- for clockwise and counter-clockwise rotation

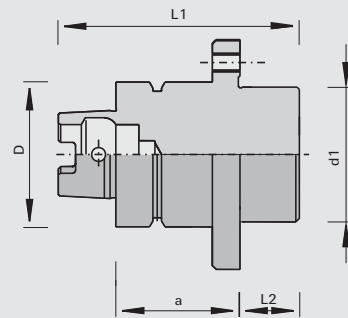
Ø D	Ø d	Ø d1min	L2	L1	a	NL	Ident-No.
120	HSK 63F	60	68	113	20	4/M8/100 + 4/9/100	183616 o
[mm]	[mm]	[mm]	[mm]	[mm]	[mm]		

933061

Mounting Arbors HSK 63F modified

product

drawing



Machine / Application

- through-feed machines with tool changer Homag
- for precise clamping of tools with bore

Design

- with pulling grooves
- flange with fastening screw thread
- interface DIN 69893 HSK 63 F for highly precise mounting on the machine spindle

Advantages

- quick tool change

Notes

- for clockwise and counter-clockwise rotation

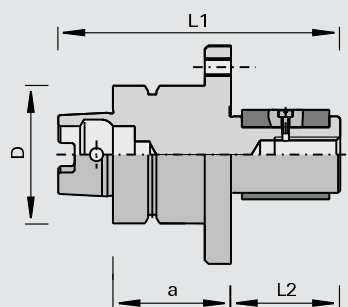
Ø D	Ø d	Ø d1min	L2	L1	a	NL	Ident-No.
63	HSK 63F	60	23,5	102.5	54	4/M8/80	183615 o
[mm]	[mm]	[mm]	[mm]	[mm]	[mm]		

933061

Mounting Arbors HSK 63F modified

product

drawing



Machine / Application

- through-feed machines with tool changer Homag
- for precise clamping of tools with bore

Design

- with pulling grooves
- flange with fastening screw thread
- interface DIN 69893 HSK 63 F for highly precise mounting on the machine spindle

Advantages

- quick tool change

Notes

- for clockwise and counter-clockwise rotation

Ø D	Ø d	Ø d1min	L2	L1	a	NL	Ident-No.
63	HSK 63F	35	40	119	54	8/M8/80	182689
63	HSK 63F	35	50	129	54	8/M8/80	182124
[mm]	[mm]	[mm]	[mm]	[mm]	[mm]		

spare parts

Dimension

Class-No.

Ident-No.

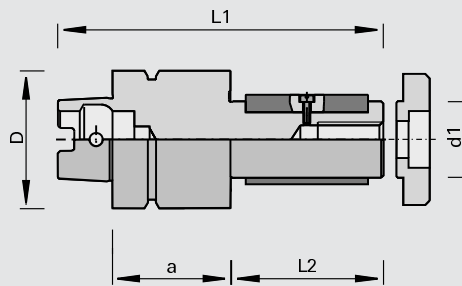
Head Cap Screws	M16x30	995111	182126 o
Covers	60x15x17 [mm]	997370	182127 o

933069

Mounting Arbors HSK 63F modified

product

drawing



Machine / Application

- through-feed machines with tool changer Homag
- for precise clamping of tools with bore

Design

- with pulling grooves
- with lid and screw (included in delivery)
- interface DIN 69893 HSK 63 F modified for high-precision adapter to the machine spindle

Advantages

- quick tool change

Notes

- for clockwise and counter-clockwise rotation

Ø D	Ø d	Ø d1min	L2	L1	a	Ident-No.
63	HSK 63F	35	40	119	54	182123
63	HSK 63F	35	70	149	54	182125
[mm]	[mm]	[mm]	[mm]	[mm]	[mm]	

spare parts

Dimension

Class-No.

Ident-No.

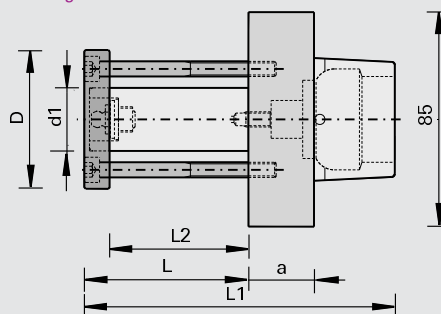
Head Cap Screws	M16x30	995111	182126
Covers	60x15x17 [mm]	997370	182127

997300

Hydro Tensile Spindles Weinig HSK

product

drawing



Machine / Application

- planing machines Weinig Powermat
- for precise clamping of tools with bore

Design

- with hydro-tensile spindle

Advantages

- precise mounting of tools with bore thanks to hydro-tensile spindle

Notes

- for clockwise and counter-clockwise rotation
- accessories: dummy piece for covering the HSK-interface on spindles not used

Ø D	Ø d	Ø d1min	L2	L1	a	Ident-No.
85	Weinig HSK	30	40	108	26	181872
85	Weinig HSK	30	55	123	26	181873
85	Weinig HSK	40	55	123	26	181874
[mm]	[mm]	[mm]	[mm]	[mm]	[mm]	

spare parts

Class-No.

Ident-No.

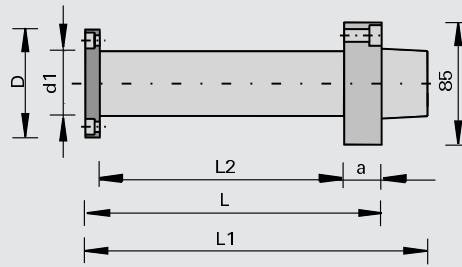
Dummy Pieces (cover)	997300	182286
----------------------	--------	--------

997300

Hydro Tensile Spindles Weinig HSK

product

drawing



Machine / Application

planing machines Weinig Powermat
for precise clamping of tools with bore

Design

with hydro-tensile spindle

Advantages

precise mounting of tools with bore thanks to hydro-tensile spindle

Notes

for clockwise and counter-clockwise rotation
accessories: dummy piece for covering the HSK-interface on spindles not used

Ø D	Ø d	Ø d1min	L2	L1	a	Ident-No.
85	Weinig HSK	40	170	238	26	181875 o
85	Weinig HSK	50	170	238	26	181877 o
85	Weinig HSK	50	210	278	26	181973 o
[mm]	[mm]	[mm]	[mm]	[mm]	[mm]	

spare parts

Class-No.

Ident-No.

Dummy Pieces (cover)

997300

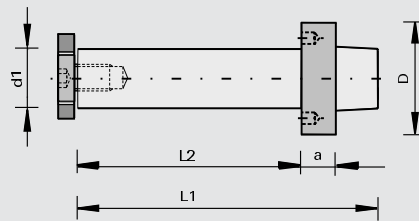
182286 o

997300

Mounting Arbors Weinig HSK

product

drawing



Machine / Application

Design

Advantages

Notes

l profile machines Weinig
Powermat
l for mounting of tools with bore

l for clockwise and counter-clockwise rotation
l other dimensions upon request
l for permissible RPM please refer to diagram

Ø D	Ø d	Ø d1min	L2	L1	a	NL	weight	Ident-No.
85	Weinig HSK	30	40	98	26	2/6/48+2/M6/48	1.7	182056 o
85	Weinig HSK	30	60	118	26	2/6/48+2/M6/48	1.8	182057 o
85	Weinig HSK	30	80	138	26	2/6/48+2/M6/48	1.9	182058 o
85	Weinig HSK	30	130	188	26	2/6/48+2/M6/48	2.2	182059 o
85	Weinig HSK	30	170	228	26	2/6/48+2/M6/48	2.4	182060 o
85	Weinig HSK	30	240	298	26	2/6/48+2/M6/48	2.8	182061 o
85	Weinig HSK	40	40	98	26	2/6/54+2/M6/54	1.9	182062 o
85	Weinig HSK	40	60	118	26	2/6/54+2/M6/54	2.1	182063 o
85	Weinig HSK	40	80	138	26	2/6/54+2/M6/54	2.3	182064 o
85	Weinig HSK	40	130	188	26	2/6/54+2/M6/54	2.8	182065 o
85	Weinig HSK	40	170	228	26	2/6/54+2/M6/54	3.2	182066 o
85	Weinig HSK	40	240	298	26	2/6/54+2/M6/54	3.9	182067 o
[mm]	[mm]	[mm]	[mm]	[mm]	[mm]		[kg]	

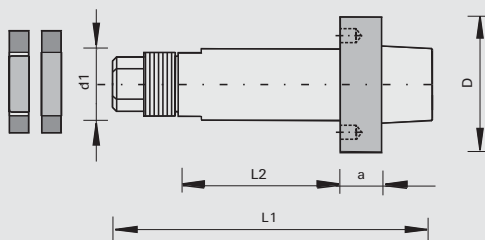


997300

Mounting Arbors Weinig HSK

product

drawing



Machine / Application

Design

Advantages

Notes

l profile machines Weinig Powermat
l for mounting of tools with bore

l for clockwise and counter-clockwise rotation
l other dimensions on request
l for permissible RPM please refer to diagram
l included in delivery: mounting arbor incl. ring and spindle nut

Ø D	Ø d	Ø d1min	L2	L1	a	NL	weight	Ident-No.
85	Weinig HSK	40	40	143	26	2/6/54+2/M6/54	1.9	183281 s
85	Weinig HSK	40	60	163	26	2/6/54+2/M6/54	2.1	183282 s
85	Weinig HSK	40	80	183	26	2/6/54+2/M6/54	2.3	183283 s
85	Weinig HSK	40	100	203	26	2/6/54+2/M6/54	2.5	183284 s
85	Weinig HSK	40	130	233	26	2/6/54+2/M6/54	2.8	183285 s
85	Weinig HSK	40	150	253	26	2/6/54+2/M6/54	2.95	183286 s
85	Weinig HSK	40	170	273	26	2/6/54+2/M6/54	3.2	183287 s
85	Weinig HSK	40	180	283	26	2/6/54+2/M6/54	3.3	183288 s
85	Weinig HSK	40	210	313	26	2/6/54+2/M6/54	3.6	183289 s
85	Weinig HSK	40	230	333	26	2/6/54+2/M6/54	3.8	183290 s
85	Weinig HSK	40	240	343	26	2/6/54+2/M6/54	3.9	183291 s
85	Weinig HSK	40	270	373	26	2/6/54+2/M6/54	4.2	183292 s
85	Weinig HSK	40	310	413	26	2/6/54+2/M6/54	4.6	183293 s
85	Weinig HSK	50	40	143	26	2/6/74+2/M6/74	2.1	183294 s
85	Weinig HSK	50	60	163	26	2/6/74+2/M6/74	2.4	183295 s
85	Weinig HSK	50	80	183	26	2/6/74+2/M6/74	2.7	183296 s
85	Weinig HSK	50	100	203	26	2/6/74+2/M6/74	3.0	183297 s
85	Weinig HSK	50	130	233	26	2/6/74+2/M6/74	3.5	183298 s
85	Weinig HSK	50	150	253	26	2/6/74+2/M6/74	3.75	183299 s
85	Weinig HSK	50	170	273	26	2/6/74+2/M6/74	4.1	183300 s
85	Weinig HSK	50	180	283	26	2/6/74+2/M6/74	4.3	183301 s
85	Weinig HSK	50	210	313	26	2/6/74+2/M6/74	4.7	183302 s
85	Weinig HSK	50	230	333	26	2/6/74+2/M6/74	5.0	183303 s
85	Weinig HSK	50	240	343	26	2/6/74+2/M6/74	5.13	183304 s
85	Weinig HSK	50	270	373	26	2/6/74+2/M6/74	5.6	183305 s
85	Weinig HSK	50	310	413	26	2/6/74+2/M6/74	6.3	183306 s
[mm]	[mm]	[mm]	[mm]	[mm]	[mm]		[kg]	

spare parts

Dimension

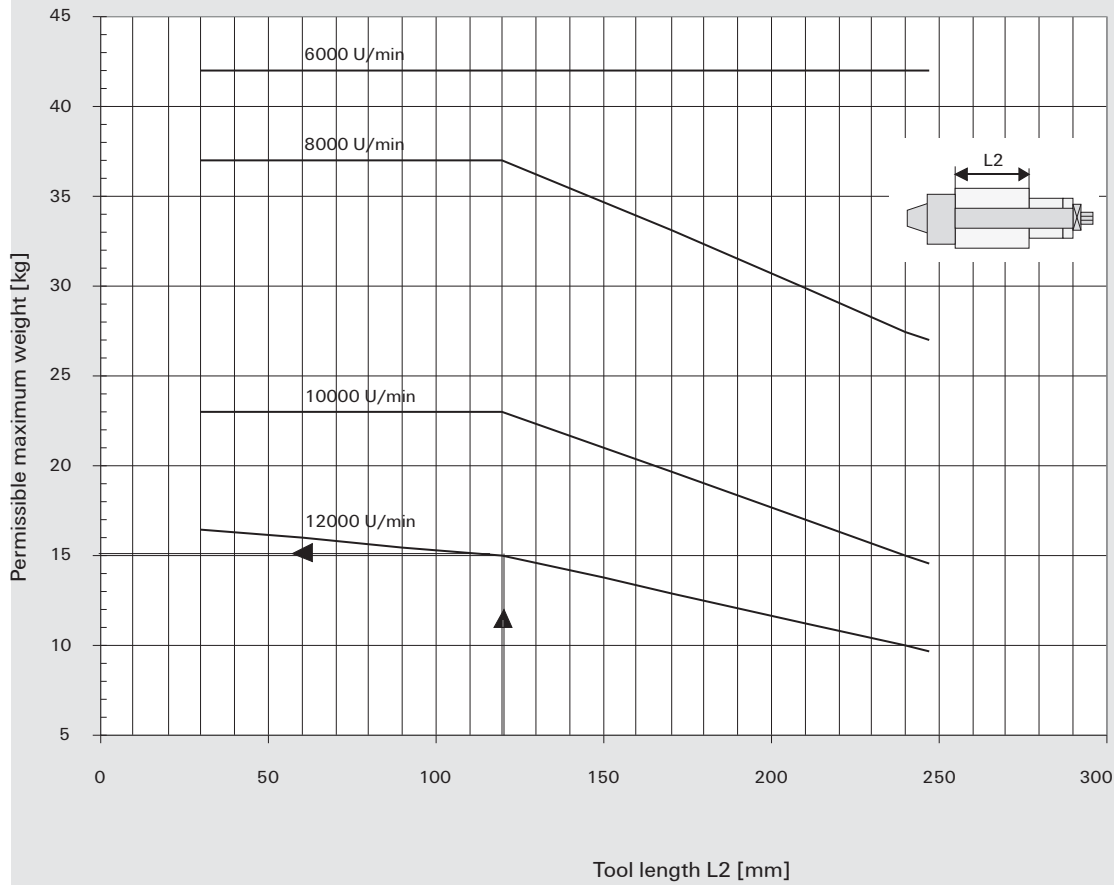
Class-No.

Ident-No.

Set Screws	M6x16 SW3	995161	001617
rings	60x15x35	955520	183308 o
spindle nuts	M33x1,5	995210	183307 o
	[mm]		

Adapter Weinig HSK

Diagram for PowerLock-Adapter



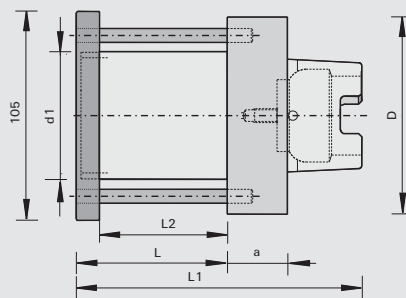
997300

Saw Blade Adapters Weinig HSK

product



drawing



Machine / Application

l Weinig Unimat 23 SP
l for mounting of thin-kerf saw blades

Design

Advantages

Notes

l for clockwise and counter-clockwise rotation
l different diameters upon request

Ø D	Ø d	Ø d1min	L2	L1	a	NL	Ident-No.
105	Weinig HSK	60	68	148	26	3/8/74	182974 o
[mm]	[mm]	[mm]	[mm]	[mm]	[mm]		

spare parts

Dimension

Class-No.

Ident-No.

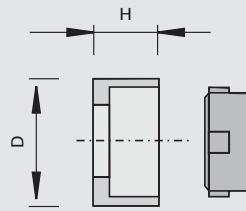
Lock Nuts	105x15xM58x1,5 [mm]	995290	182993 o
-----------	------------------------	--------	----------

994711

Balluff Chip for mounting in HSK 63F tool adapters

product

drawing



LEUCO
CNC

Machine / Application

l CNC machining centers with tool recognition system based on Balluff Chip
l for machines Biesse, Reichenbacher, Homag

Design

Balluff Chip BIS C-122-04/L, 511 Byte for mounting in HSK 63F tool adapters

Advantages

Notes

l without reading / writing
l reading / writing possible after clearance

	Ø D	H	Ident-No.
Balluff Chip with adapter	11,6 [mm]	6 [mm]	182558 o

spare parts

Dimension

Class-No.

Ident-No.

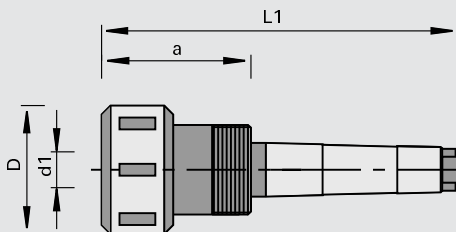
adapter for Balluff Chip	Ø 11,6x6	956500	182560 o
Balluff Chip	Ø 10x4,5 [mm]	994711	182559 o

933250

Draw-In Collet Chucks with MK shank

product

drawing



LEUCO
CNC

Machine / Application

- | CNC machining centers
- | routers
- | for precise clamping of shank-type tools with cylindrical shank

Design

- | lock nut with sleeve bearing

Advantages

- | high concentricity thanks to ball-bearing mounted lock nut

Notes

- | for clockwise and counter-clockwise rotation
- | collet chucks DIN 6388 Type 415 E
- | included in delivery: collet chuck with lock nut

Ø D	Ø d	Ø d1min	L1	a	type	Ident-No.
43	MK 2	2-16	119	50	415 E	170784
[mm]	[mm]	[mm]	[mm]	[mm]		

spare parts	Dimension	Class-No.	Ident-No.
Union Nuts	W 1 1/8"/M30x1,5	995290	165561
ball-bearing lock nuts	M30x1,5R	995290	178763
Hook Wrenches	SW40/42 DIN 1810	985720	169298
	[mm]		



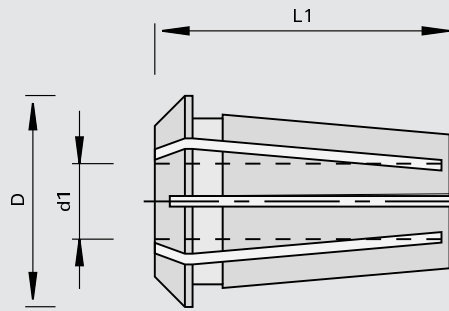
933280

Precision Collets

product



drawing



LEUCO
GNC

Machine / Application

for use in draw-in collet chuck
Type 4 15 E

Design

slotted from top and bottom
clamping tolerance 0.5 mm
according to DIN 6388 Type
415E

Advantages

Notes

Ø D	Ø d1min	L1	Ident-No.
25.5	2,5	40	820753 o
25.5	3	40	820754 o
25.5	4	40	820494 o
25.5	4,5	40	830236 o
25.5	5	40	820495 o
25.5	6	40	170779
25.5	6,35	40	821421 o
25.5	7	40	829692 o
25.5	8	40	170780
25.5	9	40	825190 o
25.5	9,5	40	168739 o
25.5	10	40	170781
25.5	12	40	168740
25.5	12,7	40	830156 o
25.5	13	40	821221 o
25.5	16	40	168741
[mm]	[mm]	[mm]	

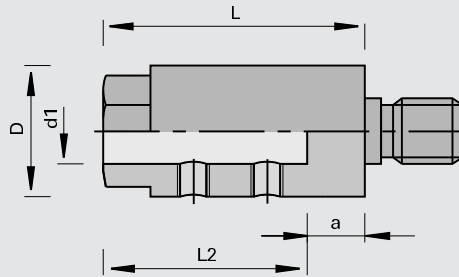
933350

Clamping Chuck Combi Systems

product



drawing



Machine / Application

for mounting of drill bits with cylindrical shank and clamping surface

Design

drill bits are clamped with setscrews

Advantages

Notes

clamping chucks with „BSS” mark are compatible with quick-changing system for drill bits
for threaded shank design and appropriate machines see technical information

Ø D	Ø d1min	L2	L	a	type	Ident-No. [L]	Ident-No. [R]
15	8	20	22	2	D	161282	161281
15	8	20	24.5	4.5	A	010683	010677
15	8	20	24.5	4.5	B	161285	161284
15	8	20	24.5	4.5	C	058412	058411
15	8	20	37	17	C	059300	059299
19	10	20	24.5	4.5	A	003575	003574
19	10	20	24.5	4.5	B	008003	008002
19	10	20	24.5	4.5	C	058414	058413
19	10	20	25	5	D	003571	003570
19	10	20	25	5	zyl. Schaft Ø 10x30	183055 o	183055 o
19	10	20	47	27	G	161287	161286
19	10	20	29.3	9.3	F	003573	003572
19	10	20	28.5	8.5	E	161987	161283
19	10	20	37	17	C	161681	161680
19	10	20	47	27	BSS D	170372 s	170371 s
[mm]	[mm]	[mm]	[mm]	[mm]			

spare parts

Dimension

for Ø D

Class-No.

Ident-No.

Set Screws	M6x4 DIN EN ISO 4029	15	995161	167068
Set Screws	M6x5 DIN EN ISO 4029	19	995161	165049
Set Screws	M5x4 DIN EN ISO 4029	15	995161	001608
	[mm]	[mm]		

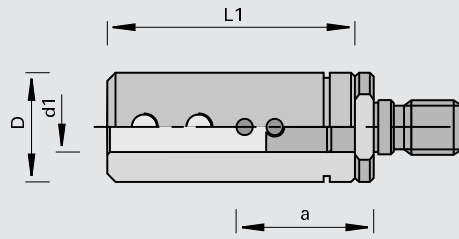
933321

Klack Quick-Changing Chucks

product



drawing



Machine / Application

- for boring machines
- for mounting of drill bits with cylindrical shank and clamping surface

Design

- for clamping of the drill bit with hex socket setscrews

Advantages

- low downtimes thanks to fast drill bit changes

Notes

- for small hole pitch widths (19 mm)
- top part is drill bit seat
- bottom part to install on the machine spindle
- for threaded shank design and appropriate machines see technical information

Ø D	Ø d1min	L1	Ident-No.
15	8	35	162014
[mm]	[mm]	[mm]	

bottom part	Type	a	Class-No.	Ident-No. [L]	Ident-No. [R]
	A	19	933322	162015	162016
	C	19	933322	162017	162018
		[mm]			

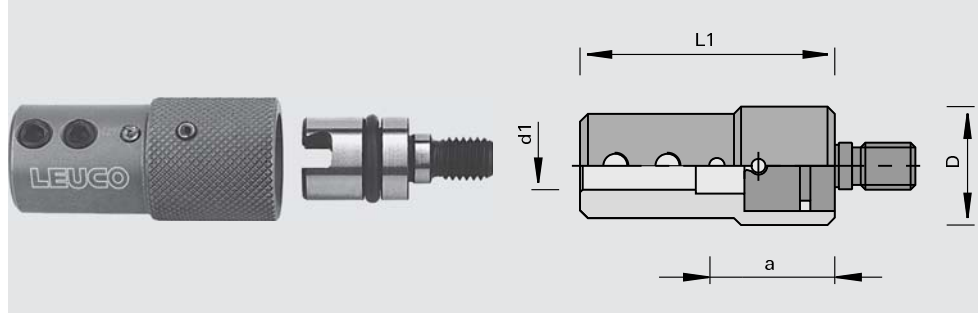
spare parts	Dimension	Class-No.	Ident-No.
Springs	0,8 DIN 17223	995790	162948
Set Screws	M5x4 DIN EN ISO 4029	995161	001608
Cranked Wrench Keys	SW2,5 DIN ISO 2936	985730	009671
	[mm]		

933321

Klack Quick-Changing Chucks

product

drawing



Machine / Application

for boring machines Nottmeyer
for mounting of drill bits with
cylindrical shank and clamping
surface

Design

for clamping of the drill bit with
hex socket setscrews

Advantages

low downtimes thanks to fast
drill bit changes

Notes

for medium hole pitch widths
(25 mm)
top part is drill bit seat
bottom part to install on the
machine spindle
for threaded shank design
and appropriate machines see
technical information

$\varnothing D$	$\varnothing d1min$	L1	Ident-No.
22	10	47	166992
22	8	49	166074
[mm]	[mm]	[mm]	

bottom part	Type	a	Class-No.	Ident-No. [L]	Ident-No. [R]
	C	19	933322	166075	166076
		[mm]			

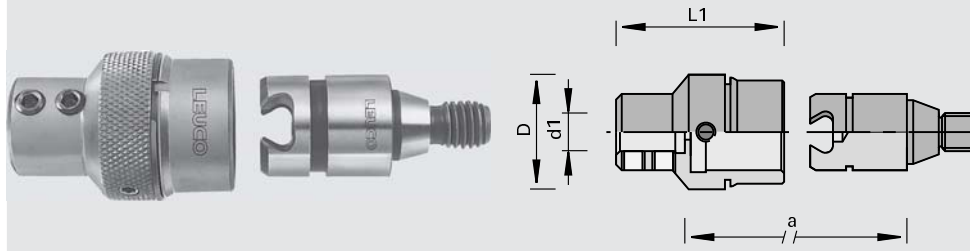
spare parts	Dimension	Class-No.	Ident-No.
Multi-Purpose Greases		993520	056746
Special Levers		997100	166095
Set Screws	M5x4 DIN EN ISO 4029	995161	001608
Set Screws	M6x5 DIN EN ISO 4029	995161	165049
O-Rings	10,77x2,62	995490	166078
	[mm]		

933321

Klack Quick-Changing Chucks

product

drawing



Machine / Application

- for boring machines
- for mounting of drill bits with cylindrical shank and clamping surface

Design

- for mounting of drill bits with cylindrical shank and clamping surface

Advantages

- low downtimes thanks to fast drill bit changes

Notes

- for larger hole pitch widths (32 mm)
- top part is drill bit seat
- bottom part to install on the machine spindle
- for threaded shank design and appropriate machines see technical information

Ø D	Ø d1min	L1	Ident-No.
30	10	44	003567
[mm]	[mm]	[mm]	

bottom part	Type	a	Class-No.	Ident-No. [L]	Ident-No. [R]
	D	26.5	933322	003561	003560
	A	19	933322	003565	003564
		[mm]			

spare parts	Dimension	Class-No.	Ident-No.
Multi-Purpose Greases		993520	056746
Special Levers		997100	164309
Reducing Bushings		955530	057513
Set Screws	M6x5 DIN EN ISO 4029	995161	165049
Set Screws	M5x8 DIN EN ISO 4028	995161	180015
Screws	M8x24L	995191	180013
Screws	M8x24R	995191	180012
	[mm]		

933321

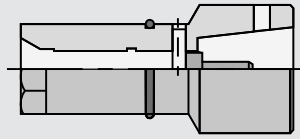
Drill Bit Quick-Changing Systems - top part

product

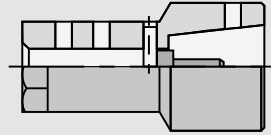


drawing

Type 1



Type 2



Machine / Application

l boring machines
l for mounting of drill bits with cylindrical shank with collet chuck or clamping screws

Design

l for clamping of the drill bit with hex socket setscrews

Advantages

l low downtimes thanks to fast drill bit changes

Notes

l for larger hole pitch widths (32 mm)
l top part is drill bit seat
l bottom part to install on the machine spindle
l for threaded shank design and appropriate machines see technical information

	Dimension	type	Ident-No.
collet chuck adapter	Ø2,5 / 3	1	168664 #
locating bore	Ø10	2	168669
locating bore	Ø8	2	168668
	[mm]		

spare parts

	Dimension	Class-No.	Ident-No.
collet chuck	Ø3	933380	168666
collet chucks	Ø2,5	933380	168665
Engineers Wrenches	9x11 DIN 3118	985720	168672 o
Engineers Wrenches	11x13 DIN 3118	985720	168670 o
Engineers Wrenches	14x17 DIN 3118	985720	168671
	[mm]		

spare parts

	Dimension	Class-No.	Ident-No.
Set Screws	M6x5 DIN EN ISO 4029	995161	165049
Set Screws	M5x4 DIN EN ISO 4029	995161	001608
	[mm]		

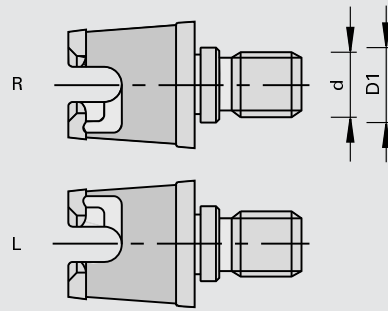
933322

Drill Bit Quick-Changing Systems - bottom part

product



drawing



Machine / Application

l boring machines
l for installation on the machine spindle

Design

l conical design

Advantages

Notes

l for threaded shank design and appropriate machines see technical information

type	Ø d	Ø D1	Ident-No. [L]	Ident-No. [R]
C	M8	9	168662	168663
D	M10	11	170243	170242
	[mm]	[mm]		

spare parts

dust protection cap
Socket Wrenchs

Class-No.

Ident-No.

997800
985730

170283
168673 &

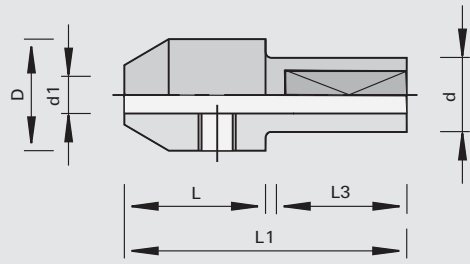
933389

Adapters

product



drawing



Machine / Application

for mounting of twist drills in
combi chuck and Klack chuck

Design

shank with clamping surface
thread M5, without screw

Advantages

Notes

adjusting and attachment
screw Ident-No. 181520
M5x11,5 for Weeke quick
clamping chuck must be
ordered separately

$\emptyset d_{1min}$	L	$\emptyset d$	L3	$\emptyset D$	L1	Ident-No.
2	19	10	21	15	41	183275
2,5	19	10	21	15	41	183276
3	19	10	21	15	41	183277
3,5	19	10	21	15	41	183278
4	19	10	21	15	41	183279
5	19	10	21	15	41	183280
[mm]	[mm]	[mm]	[mm]	[mm]	[mm]	

spare parts

Dimension

Class-No.

Ident-No.

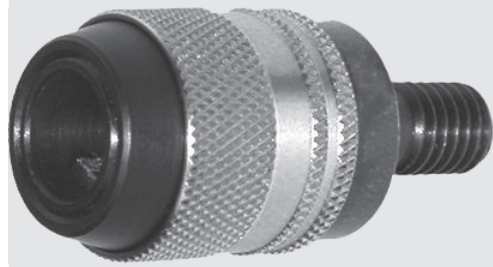
Set Screws	M6x6 DIN EN ISO 4029	995161	180003
Cranked Wrench Keys	SW3 DIN ISO 2936 [mm]	985730	009672



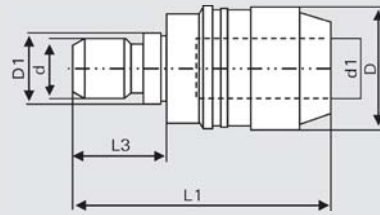
933359

Drill Bit Quick-Changing Systems

product



drawing



LEUCO
CNC

Machine / Application

- | boring machines
- | CNC machining centers
- | for mounting of drill bits with cylindrical shank and clamping surface

Design

Advantages

- | low downtimes thanks to fast drill bit changes
- | no special adjusting screw necessary
- | for all common drill bits with shank Ø 10 mm and boring Ø < 20 mm

Notes

- | for threaded shank design and appropriate machines see Technical Information

Ø D	Ø D1	Ø d	Ø d1min	L1	L3	type	Ident-No. [L]	Ident-No. [R]
20	9	M8	10	42	15	C	182396 o	182395 o
20		M8	10	42	15	A	182398 o	182397 o
20		10	10	45	18		182400 o	182399 o
20	11	M10	10	42	15	D	182402 o	182401 o
20		M10	10	42	15	B	182404 o	182403 o
[mm]	[mm]	[mm]	[mm]	[mm]	[mm]			

933390

Universal Drill Chucks with SK-shank or HSK shank

product

drawing


LEUCO
CNC

Machine / Application

- | CNC machining centers with automatic tool changer
- | for clamping of drill bits with cylindrical shank

Design

- | continuously adjustable clamping area between 1-13 mm
- | $n_{max} = 20,000 \text{ min}^{-1}$
- | hardened clamping jaws

Advantages

- | fine balance is easy on spindle and spindle bearing
- | high clamping accuracy over total lifetime of drill chuck thanks to hardened clamping jaws
- | high holding moment
- | no chips and dirt in the clamping zone thanks to special clamping jaws

Notes

- | for clockwise and counter-clockwise rotation
- | included in delivery: clamping key, retaining bolts

Ø D	Ø d	Ø d1min	L1		Ident-No.
50	SK 30 (DIN)	1-13	90	Weeke, Maka, Reichenbacher	180375 o
50	SK 30	1-13	90	Biesse from 9/92, Masterwood (HSD motors)	180376 o
50	SK 30	1-13	90	Alberti, Masterwood (Colombo motors)	180377 o
50	SK 30	1-13	90	Morbidelli, SCM (with ring gear)	180378 o
50	SK 40 (DIN)	1-13	90	Maka, Reichenbacher Stegherr	180379 o
57	SK 40 (DIN)	3-16	90	Maka, Reichenbacher Stegherr	180380 o
50	HSK 63F	1-13	112	Homag, EIMA, Weeke, IMA from 9/94	180381
57	HSK 63F	3-16	112	Homag, EIMA, Weeke, IMA from 9/94	180382
[mm]	[mm]	[mm]	[mm]		

spare parts

Dimension

Class-No.

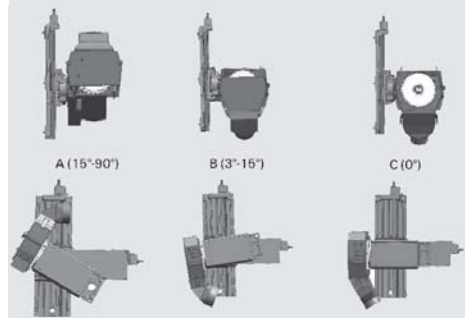
Ident-No.

Cranked Wrench Keys	SW6x100 [mm]	985730	180383 o
---------------------	-----------------	--------	----------

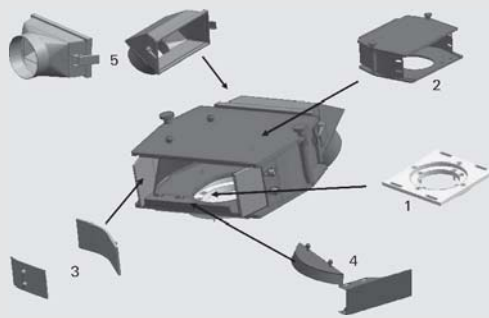
975917

LEUCO Dust Hoods

product



drawing



Machine / Application

- | double end tenoners
- | especially for flooring manufacturing

Design

- | LEUCO dust hood system

Advantages

- | optimum chip caption
- | wear parts individually replaceable
- | flow-optimizing design

Notes

complete dust hood - consisting of one part of each of the following 5 groups

flange	Ø D	B	motor output	Class-No.	Ident-No.
flange Ø180x13	180	13	Perske up to 11 KW	975117	540301 o
flange Ø180x13	180	13	Perske from 11 KW	975117	540430 o
	[mm]	[mm]			

2 - Basic hood	tool Ø D	tilting area	basic hood form	Class-No.	Ident-No.
basic hood 15° - 90° cpl. tool-Ø 250 mm	250	15 - 90	A	975217	540295 o
basic hood 3° - 15° cpl. tool-Ø 250 mm	250	3 - 15	B	975117	540317 o
basic hood 0° cpl. tool-Ø 250 mm	250	0	C	975117	540389 o
	[mm]	[°]			

3 - Side profile (wear plate and adjusting plate)	thickness of wear plate	Class-No.	Ident-No.
side profile standard cpl.	8	975417	540302 o
side profile 0° right cpl.	8	975417	540358 o
side profile 0° left cpl.	8	975417	540386 o
	[mm]		

4 - Chip flow set	height of C plate	height of chip flow plate	Class-No.	Ident-No.
chip flow set 12/82 cpl.	12	82	975217	540227 o
chip flow set 22/72 cpl.	22	72	975217	540228 o
chip flow set 32/62 cpl.	32	62	975217	540229 o
chip flow set 42/52 cpl.	42	52	975217	540230 o
chip flow set 52/42 cpl.	52	42	975217	540231 o
chip flow set 62/32 cpl.	62	32	975217	540232 o
chip flow set 67/27 cpl.	67	27	975217	540233 o
	[mm]	[mm]		

5 - Extraction connection	tool Ø D	Ø connection	angle	basic hood form	Class-No.	Ident-No.
connection 0° - Ø 120 mm	250	120	0	A, B	975217	540298 o
connection 0° - Ø 140 mm	250	140	0	A, B	975217	540304 o
connection 30° - Ø 120 mm	250	120	30	A, B	975217	540308 o
connection 30° - Ø 140 mm	250	140	30	A, B	975217	540310 o
connection 0° - Ø 120 mm	250	120	0	C	975217	540362 o
connection 0° - Ø 140 mm	250	140	0	C	975217	540392 o
	[mm]	[mm]	[°]			

spare parts	Dimension	basic hood form	Class-No.	Ident-No.
basic plate	D = 250 mm	A, B, C	975217	540291 o
basic hood 15° - 90° cpl. tool- \varnothing 250 mm		A	975217	540292 o
thread bolt		A, B, C	975217	540201 o
wear plate 0° standard cpl.	S = 8 mm	A, B	975517	540210 o
wear plate 0° right cpl.	S = 8 mm	C	975517	540356 o
wear plate 0° left cpl.	S = 8 mm	C	975517	540364 o
C plate 12	H = 12 mm	A, B, C	975217	540213 o
C plate 22	H = 22 mm	A, B, C	975217	540214 o
C plate 32	H = 32 mm	A, B, C	975217	540215 o
C plate 42	H = 42 mm	A, B, C	975217	540216 o
C plate 52	H = 52 mm	A, B, C	975217	540217 o
C plate 62	H = 62 mm	A, B, C	975217	540218 o
C plate 67	H = 67 mm	A, B, C	975217	540219 o
connection 0° - \varnothing 120 mm		A, B	975217	540298 o
connection 0° - \varnothing 140 mm		A, B	975217	540304 o
connection 30° - \varnothing 120 mm		A, B	975217	540308 o
connection 30° - \varnothing 140 mm		A, B	975217	540310 o
connection 0° - \varnothing 120 mm		C	975217	540362 o
connection 0° - \varnothing 140 mm		C	975217	540392 o
	[mm]			



985700

Cone wiper

product

drawing



Machine / Application

Design

Advantages

Notes

for cleaning of the inner cones of the cone tool adaptors

Ø d

Ident-No.

SK 30		180907	o
SK 40		180908	o
HSK 25		180909	o
HSK 32		180910	o
HSK 63		180911	o
[mm]			

985202

Mounting Devices

product

drawing



Machine / Application

Design

Advantages

Notes

for quick and simple mounting and adjusting of cutting tools in draw-in collet chucks or on arbors and tool holders

with two-part clamping jaws made from high-quality light alloy
 mounted on stable pedestal which can be fixed onto workbench
 quick-grip lever for clamping of clamping chucks or holding arbors


variably applicable for all interfaces by simple exchanging of the clamping jaw

	Ø d	Ident-No.	
SK 30 (DIN) / HSK 50F	50	180362	o
SK 40 (DIN)	63,5	180363	o
SK 30 with ring gear (Morbidelli, SCM)	49	180364	o
SK 30 (ISO) CMS / BT 30	46	180365	o
HSK 63F / 63E	63	180366	
BT 35	53	180367	o
HSK 85 (Weinig)	85	182284	o
[mm]			

spare parts	for Ident-No.	Class-No.	Ident-No.
Clamping Jaws (2-parts)	180362	997300	180368 o
Clamping Jaws (2-parts)	180363	997300	180369 o
Clamping Jaws (2-parts)	180364	997300	180370 o
Clamping Jaws (2-parts)	180365	997300	180371 o
Clamping Jaws (2-parts)	180366	997300	180372 o
Clamping Jaws (2-parts)	180367	997300	180373 o
Clamping Jaws (2-parts)	182284	997300	182285 o
Pedestal (without clamping jaw)		997300	180374 o

985202


Mounting Devices

product	drawing		
			
Machine / Application for quick and simple mounting and adjusting of cutting tools in draw-in collet chucks or on arbors and tool holders	Design mounted on stable pedestal which can be fixed onto workbench	Advantages simplest handling offering highest comfort thanks to roll clamping system, no clamping or jamming necessary	Notes for all adapters HSK 63 F
Ø d1min			Ident-No.
HSK 63F [mm]			182467



985202

Mounting Devices

product	drawing		
			
Machine / Application for quick and simple mounting and adjusting of cutting tools in draw-in collet chucks or on arbors and tool holders	Design high-end version with integrated plastic inserts to protect the tool holder mounted on stable pedestal which can be fixed onto workbench	Advantages simplest handling offering highest comfort thanks to roll clamping system, no clamping or jamming necessary	Notes for all adapters HSK 63 F
Ø d1min			Ident-No.
HSK 63F [mm]			182166 o

985201

inductive shrinking device ISG 2202

product



drawing

Machine / Application

for shrinking of HW shanks Ø 3 - 20 mm and HS steel shanks Ø 6 - 20 mm

Design

- | device with inductor, centering discs for tool adapters and 3 replacement discs
- | color: grey-white RAL 9002
- | performance: 8 kW
- | version without ventilator

Advantages

- | inductor can be lowered to the heating position by simple manual operation and can be locked by pushing a button
- | choose the shrinking diameter on the control panel and press the start button
- | the stored time elapses, at the end the inductor moves automatically upward
- | the process can be ended ahead of time by pressing the stop button

Notes

| in combination with the cooling station FKS 03 shrinking, cooling and cleaning can be done within seconds please order separately

	Dimension	weight	Ident-No.
inductive shrinking device ISG 2202 (without ventilator)	640x310x390 [mm]	25 [kg]	184036 o

accessories	weight	Class-No.	Ident-No.
liquid cooling device FKS 03 (manual)	22.5	985201	184037o
tool adapter HSK40/50/63F for FKS03		985201	184039o
tool adaptor SK30/40/BT30/40 for FKS03		985201	184038o
	[kg]		

985201

inductive shrinking device ISG 3202

product



drawing

Machine / Application

- | for shrinking of HW shanks Ø 3 - 50 mm and HS shanks Ø 6 - 50 mm
- | by means of the inductive shrinking device ISG 3202 all tools with Ø 3 - 32 mm can be shrunked by simple change of the discs the energy coupling is optimally adapted to the respective clamping chuck thanks to special inductors large tools up to 50 mm can also be shrunked

Design

- | device with inductor with 4 replacement discs
- | color: grey-white RAL 9002
- | performance: 10 kW
- | version without ventilator

Advantages

- | operation of the ISG 3202 by menu
- | all parameter are shown at the same time
- | several languages can be chosen
- | data for clamping chucks with special geometries can be saved

Notes

- | in combination with the cooling station FKS 03 shrinking, cooling and cleaning can be done within seconds please order separately

	Dimension	weight	Ident-No.
inductive shrinking device ISG 3202 (without ventilator)	900x620x500 [mm]	43 [kg]	184035 o
accessories	weight	Class-No.	Ident-No.
liquid cooling device FKS 03 (manual)	22.5	985201	184037o
tool adapter HSK40/50/63F for FKS03		985201	184039o
tool adaptor SK30/40/BT30/40 for FKS03		985201	184038o
	[kg]		

985300

digital height measuring device

product



drawing



Machine / Application

- | for quick and precise adjusting of cutting tools in draw-in collet chucks or on arbors and tool holders

Design

- | repeating precision 0.01 mm
- | tungsten carbide-tipped scriber
- | digital display

Advantages

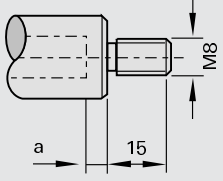
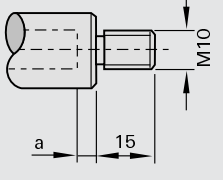
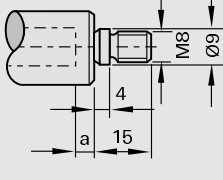
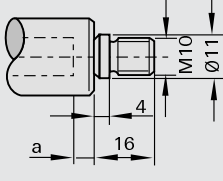
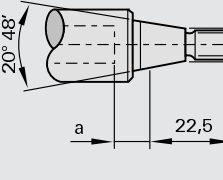
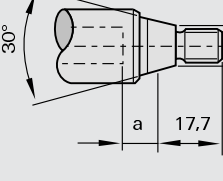
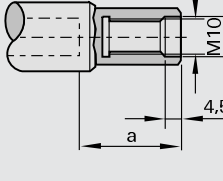
- | simple adjustment and fixing of the height dimension

Notes

	Ident-No.
digital height measuring device	183684 o

Connection dimensions for Boring Bit Collet Chucks

Threaded shank design for Kombi and Klack systems with appropriate machines

Type	Machine assignment
<p>A</p> 	<p>Nottmeyer Lehbrink Pankoke + Kochsiek Priß + Horstmann</p>
<p>B</p> 	<p>Ayen Holzma Knoevenagel Mayer Brandt Reichenbacher Torwegge Zubiola</p>
<p>C</p> 	<p>Nottmeyer</p>
<p>D</p> 	<p>Böttchner + Gessner Biese Busellato Dingenotto Hüllhorst Holz-Her Homag Koch</p> <p>Morbidelli Reimall Torwegge Weeke Reich</p>
<p>E</p> 	<p>Bilek Type KÜN Knoevenagel</p>
<p>F</p> 	<p>Alberti Balestrini Bilek (05 R) Busellato Dubus Goma Grotefeld Omeg</p> <p>Reimall Schleicher SCM Tanzani Viciani Vitap Weingärtner</p>
<p>G</p> 	<p>Scheer</p>